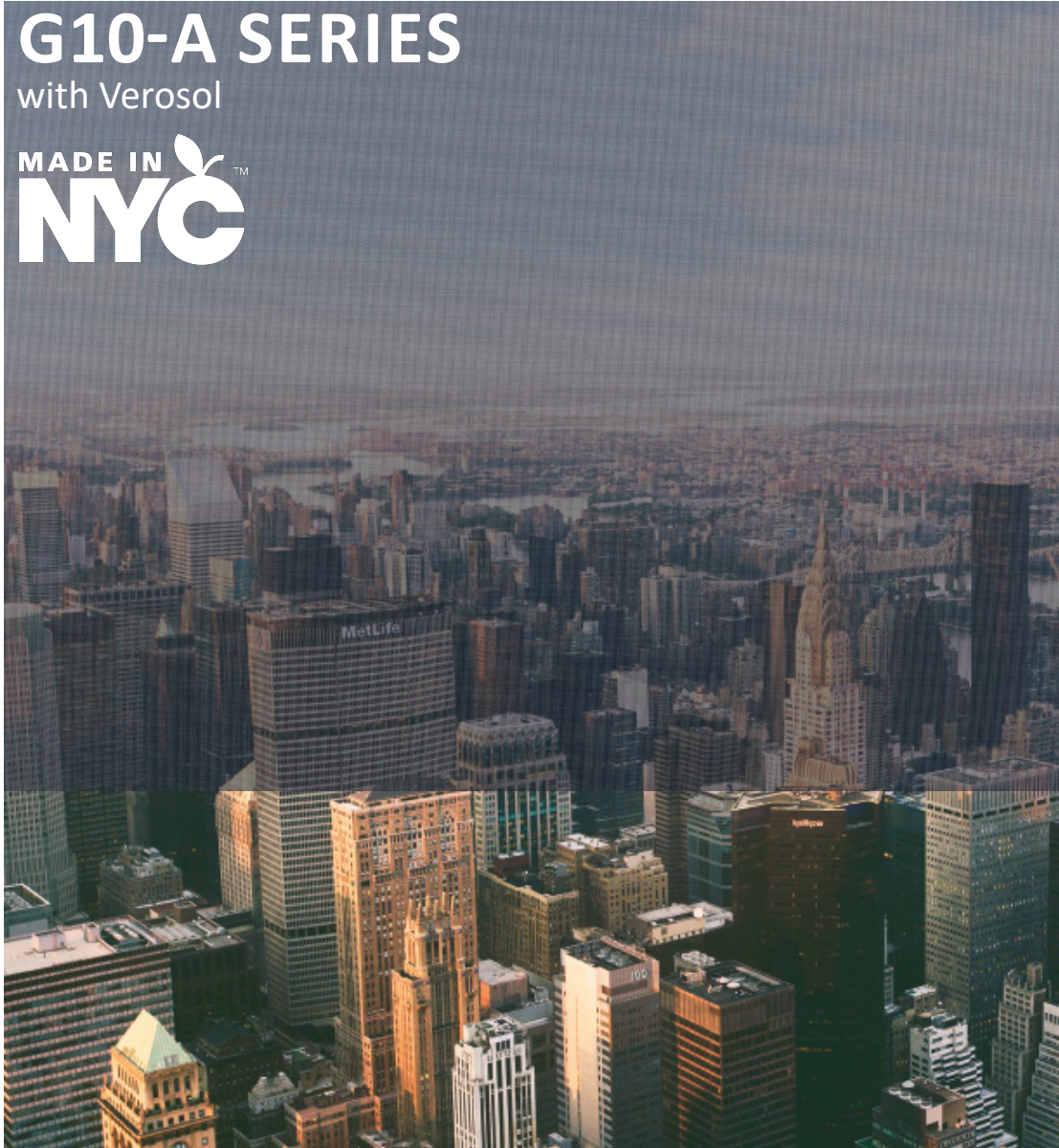


## G10-A SERIES

with Verosol

MADE IN  
**NYC**<sup>™</sup>



### G10-A by DFB

This fabric effectively provides natural shade by reducing heat and glare, to ensure a comfortable indoor climate.

A microscopic aluminum coating, Verosol, is applied, reflecting sunlight away from buildings and saving energy unlike any other fabric.

## COLORS



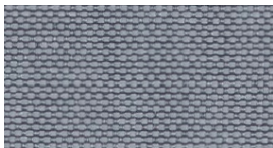
Snow



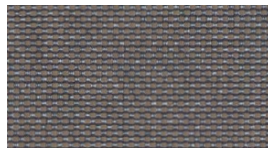
Oatmeal



Platinum



Gunmetal



Coffee



Graphite

*Colors may vary slightly from swatch samples. All variations are within industry standards.  
Please check the color before cutting.*



## FEATURES

- Solar reflectance up to 74%
- Healthy, phthalate-free screen
- Great value / performance ratio
- Available in 6 neutral colors
- Clear view-through and robust look and feel
- Beautiful basket weave construction
- Excellent thermal and visual comfort



## SPECIFICATIONS

Composition	75% PVC, 25% Polyester
Width	94.5" (240cm)
Fire Classification	NFPA 701, CA Title 19, UK BS 5867 Part 2, French M1
Environmental Standards	Phthalate free, Greenguard, Öko-Tex 100, ISO 9001, ISO 14001

*Contact your DFB Sales Representative to find out how you can integrate G10-A with our G10 Series, and pair this fabric with Lutron, for complete energy savings.*

## G10-A DATA

	glazing performance	White FD01	Beige FD02	FD03	Brown FB03	Dark Grey FB02	Black FB01
		OmniaScreen	OmniaScreen	OmniaScreen	OmniaScreen	OmniaScreen	OmniaScreen
Solar transmission*		6%	6%	6%	5%	5%	5%
Solar reflection outside*		74%	73%	73%	72%	72%	72%
Solar reflection inside		70%	64%	55%	14%	9%	6%
Light transmission*		6%	5%	5%	5%	5%	5%
Light reflection outside		73%	72%	72%	71%	71%	70%
Light reflection inside		74%	69%	60%	14%	10%	5%
Openness Factor		3-4%	3-4%	3-4%	3-4%	3-4%	3-4%
UV transmission		5%	5%	5%	5%	5%	5%
IR emisivity metal side		0,14	0,15	0,15	0,15	0,15	0,15
IR emisivitycolour side		0,87	0,87	0,87	0,87	0,87	0,87
IR transmission		0,02	0,02	0,02	0,02	0,02	0,02
Colour rendering index		99	99	99	99	99	99
<b>High Performance glazing (reference glazing D EN14501)</b>							
Light transmission	60%	4%	4%	4%	4%	4%	4%
g-value	32%	15%	15%	15%	16%	16%	16%
SC (Shading coefficient)	37%	17%	17%	17%	18%	18%	18%
U-value in W/m²K	1,1	0,8	0,8	0,8	0,8	0,8	0,8
<b>Insulating glazing (reference glazing C EN14501)</b>							
Light transmission	79%	5%	5%	4%	4%	4%	4%
g-value	59%	27%	27%	27%	28%	28%	28%
SC (Shading coefficient)	68%	31%	31%	31%	32%	32%	32%
U-value in W/m²K	1,2	0,8	0,8	0,8	0,8	0,8	0,8
<b>4 mm double clear glazing (reference glazing B EN14501)</b>							
Light transmission	82%	6%	5%	5%	5%	5%	5%
g-value	76%	24%	24%	25%	26%	26%	26%
SC (Shading coefficient)	87%	28%	28%	29%	30%	30%	30%
U-value in W/m²K	2,8	1,3	1,3	1,3	1,3	1,3	1,3
<b>4 mm single clear glazing (reference glazing A EN14501)</b>							
Light transmission	90%	6%	5%	5%	5%	5%	5%
g-value	85%	22%	23%	23%	24%	24%	24%
SC (Shading coefficient)	98%	25%	26%	26%	28%	28%	28%
U-value in W/m²K	5,8	2	2	2	2	2	2