

GL Series

DFB's GL Series is a light-filtering and heat-insulating PVC Free material consisting of tinted and clear layers of polyester film with an aluminum core. Use GL Series as one layer in a dual-shade solution, creating an insulating roller shade, ideal for clear, tinted, or heat-absorbing glass.

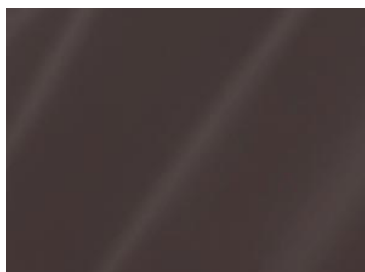
Composition	100% Polyethylene Terephthalate (PET)
Width	60" & 72"
Openness	Transparent film



COLORS



Smoke



Bronze