



SOL-R-SHADE

DFB

# MANUAL SHADES

## Visual Impact. Value. Versatility

When selecting window coverings it's important to consider both the visual aesthetics and functional aspects including heat gain, glare, and energy efficiency. DFB's Sol-R-Shade System offers unparalleled design options, as well as a range of manual roller shade systems, which enable efficient installation and effortless operation for the end-user. Our Sol-R-Shade system offers a wide range of attachment options (fascia, contract pocket, and blackout side channels,) as well as a 16lb lift clutch system. DFB's products are manufactured in Long Island City, NY and installed by our skilled technicians.



Manual Shades, Fabric: G30, Ash





Manual Shades, Fabric: G30, Ash



Manual Shades, Fabric: G10, Oatmeal



Fusion Motorized Shades, Fabric: G20, Snow



# MOTORIZED SHADES

## LOW VOLTAGE FUSION

The Fusion Low Voltage motor is the quietest in the market, rated 38 dba. It offers a wide range of control options, simplified wiring, and ensures perfect shade alignment. One motor can operate up to 4 multi-banded shades. The intelligent encoded motors operate from a smart power and data panel. Fusion Low Voltage offers seamless integration with most lighting, BMS, & AV systems. It can also link into the Horizon system for full automation.

## LINE VOLTAGE FUSION

The Fusion Line Voltage motor is a quiet motorized shading system, rated at 38-56 dba (sound level dependent on motor type), with the ability to integrate into AV or lighting systems via a dry contact closure, or an isolated relay for local control. One motor can operate up to 5 multi-banded shades and can also be utilized for skylights and angled shades. The intelligent encoded motors are connected via a data bus line that connects seamlessly with most lighting, BMS, & AV systems. It can also be linked to the Horizon system for full automation.



STREAMLINED  
PROGRAMMING



SOLAR  
TRACKING



FACILITY  
MANAGEMENT



REAL & TIMED  
EVENTS



ULTRA-  
QUIET



ENERGY  
SAVINGS

## QS by DFB

QS by DFB is an ultra quiet, low voltage motorized system. This operation is driven by the electronic drive unit, housed inside the roller shade assembly, which controls the smooth movement of the shade.



### FEATURES & BENEFITS

- Ultra quiet operation
- Shades move in perfect unison and provide exact alignment within 1/8" at all times
- Smooth, silent stops and starts
- Offers programmable stop points
- Provides maximum window coverage with the smallest possible light gaps.
- Light gaps are symmetrical on both sides of the shade, with 3/4" between the fabric & window frame.
- Easy to use and easy to read controls

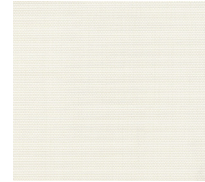


# SELECT FABRICS

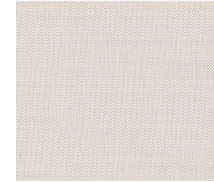


## G10-B

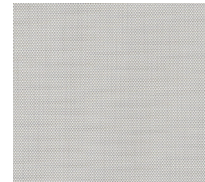
G10-B is the latest in innovative sun control fabric development. Uniquely designed for the demanding and competitive commercial market, G10-B is an ideal choice for spec-driven projects that require noise reduction. This acoustical roller shade fabric offers a 0.6 Noise Reduction Coefficient (NRC) rating. The fabric's more robust core yarn is ideal for capturing and diffusing wave lengths at certain frequencies, therefore, instead of sound passing through the fabric, it dissipates. Available in 3% & 5% openness factors.



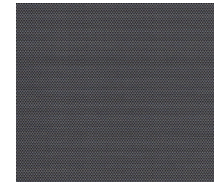
SNOW



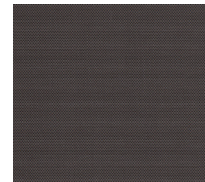
OATMEAL



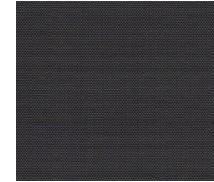
PLATINUM



GUNMETAL



COFFEE



GRAPHITE



# SOL-R-SHADE

# DFB

## G55



G55 sustainable Sol-R-Control fabrics are eco-friendly full basketweaves designed to meet the most stringent environmental design standards. This PVC Free fabric is 100% recyclable, and offers the same solar heat and glare control properties as traditional Sol-R-Control fabrics by conserving energy, harnessing natural light, and maintaining interior comfort levels. Available in 1%, 3%, & 5% openness factors.

### Benefits of G55 include:

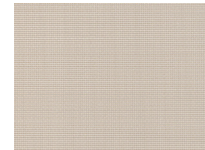
- 100% recyclable
- Produced from 100% post-industrial (pre-consumer) recycled content.
- Repeat recyclability for continued sustainability.
- PVC-free
- Lead-free
- Every component of this TPO compound is heat and chemically stable.
- Resistant to microbial and fungal growth.
- Durable and washable.



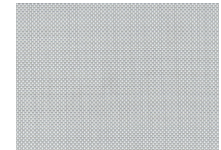
COTTON



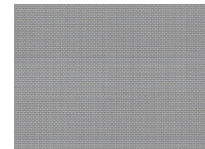
ALMOND



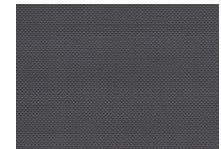
BARLEY



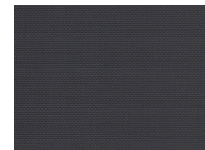
STONE



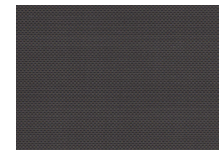
NICKEL



SLATE



MIDNIGHT



BARK

\*Additional shade fabric(s) are available upon request

