



## NOISE + SOUND

With the rise of an open office concept, these interactive spaces promote collaboration and teamwork, and in turn, increase the level of noise. Studies indicate that unwanted noise causes stress, and other health ramifications, further emphasizing the importance of acoustical solutions in the workplace.

## ACOUSTICAL SOLUTIONS: PANEL-TEX

Panel-Tex by DFB are instant acoustical panels tailored to fit any wall and desired space, due to the products customizable sizes. DFB offers a range of products under our Panel-Tex umbrella, all of which have proven noise reduction characteristics.

DFB determines the acoustical value of our products through Noise Reduction Coefficient (NRC), which measures the amount of sound absorbed when it strikes a particular surface. These products achieve a NRC rating from .30 to .90 for prefabricated panels, and 1.0 for our fabric wrapped Ceiling Baffles.

**MADE IN NYC**™ All panels are manufactured at our facility in Long Island City, ensuring a quick lead time under tight deadlines.



LinkedIn, NYC

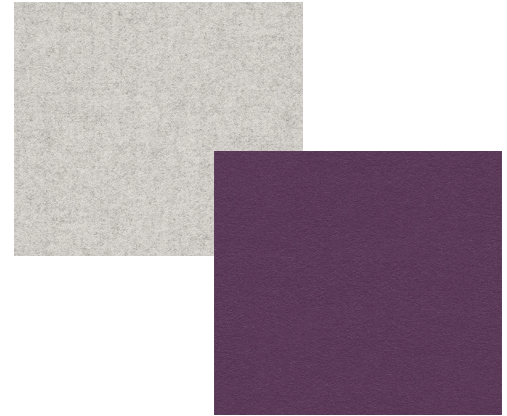


## FABRICS

DFB's Panel-Tex System is compatible with a variety of fabrics, including felt, polyester, & Carnegie Xorel. Panels are prefabricated per project specifications, and installed by DFB technicians.

## SUBSTRATES

DFB offers both acoustical or tackable substrates for our Panel-Tex System. Whether you require panels that absorb sound, or panels where a long lasting tackable surface is needed, we have the solution that is best for you.



Delos Headquarters, NYC

## PANEL-TEX VERSATILITY



Conde Naste, NYC  
Leather Wrapped Panels



Mediamath, NYC  
Fabric Wrapped Panels



DFB Sales, Lobby  
Fabric Wrapped Panels

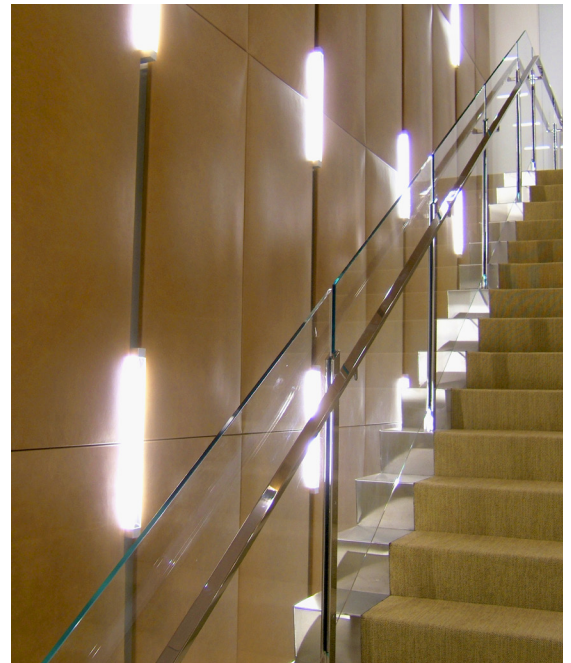
## PANEL-TEX VERSATILITY



650 5th Avenue  
Grid Panels, Metal trim by others



Two Sigma, NYC  
Custom Herringbone Panels



Altria, NYC  
Leather Wrapped Panels

## TRADITIONAL WALL PANEL SPECIFICATIONS

- **Substrate(s):** Quiet-Core™ (Acoustical) & Mi-Core™ (Tackable)
- **Panel Thickness:** Quiet-Core™: 3/4" & 1"  
Mi-Core™: 1/2" & 3/4"
- **Maximum Sizes:** 1" Quiet-Core™ & 3/4" Mi-Core™: 48" x 120"  
3/4" Quiet-Core™ & 1/2" Mi-Core™: 48" x 96"
- **Mounting Options:** Quick grab formula and concealed nails
- **Lead Time:** 4 weeks
- **Acoustics:** Quiet-Core™ reaches a 0.8 NRC rating when wrapped in fabric  
Mi-Core™ reaches a 0.3 NRC rating
- **Fire Rating:** In accordance with ASTM E84, fabric wrapped panels achieve a Class A rating, passing NFPA 701

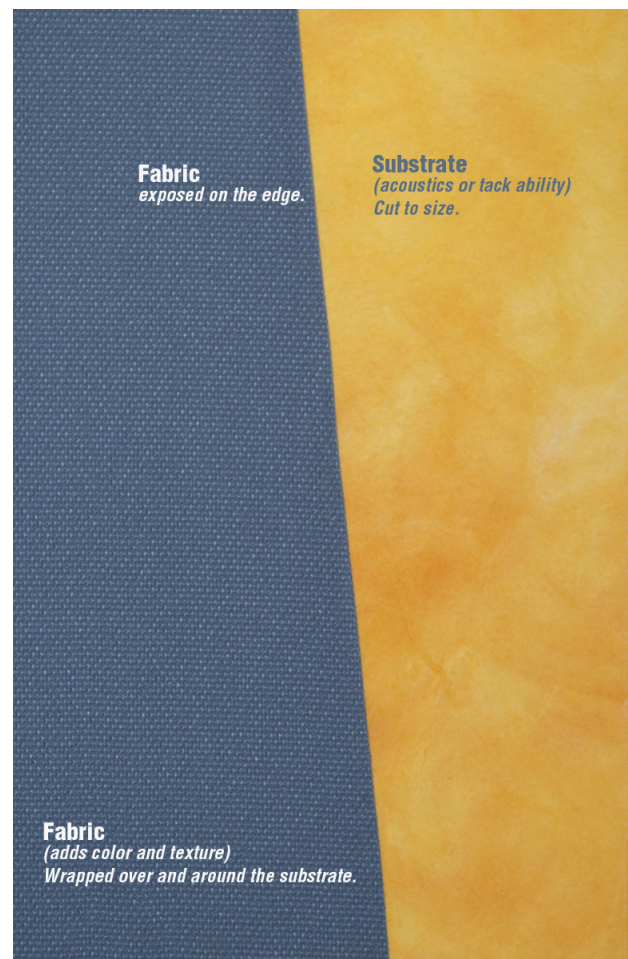
## SUBSTRATE(S)

### QUIET-CORE™

This acoustical substrate is made from inorganic glass mineral wool, and has excellent sound absorption characteristics.

### MI-CORE™

This tackable substrate from DFB offers moderate acoustical properties. Mi-Core™ is constructed with inorganic minerals and fibers, which makes it resistant to moisture and warping. This durable substrate is recommended for high traffic areas.



## SWELL CONTOURED PANELS

Our SWELL Panels fall under the Panel-Tex umbrella offering unique elliptical shaped panels that can be configured in a variety of patterns, using a combination of standard and custom sizes. Standard widths range from 2" to 10", and can be mixed and matched allowing for maximum creativity. To further enhance your project, pair and install our SWELL panels with our traditional prefabricated panels for a highly acoustical room.



AMC Networks, NYC



Volunteers of America, NYC



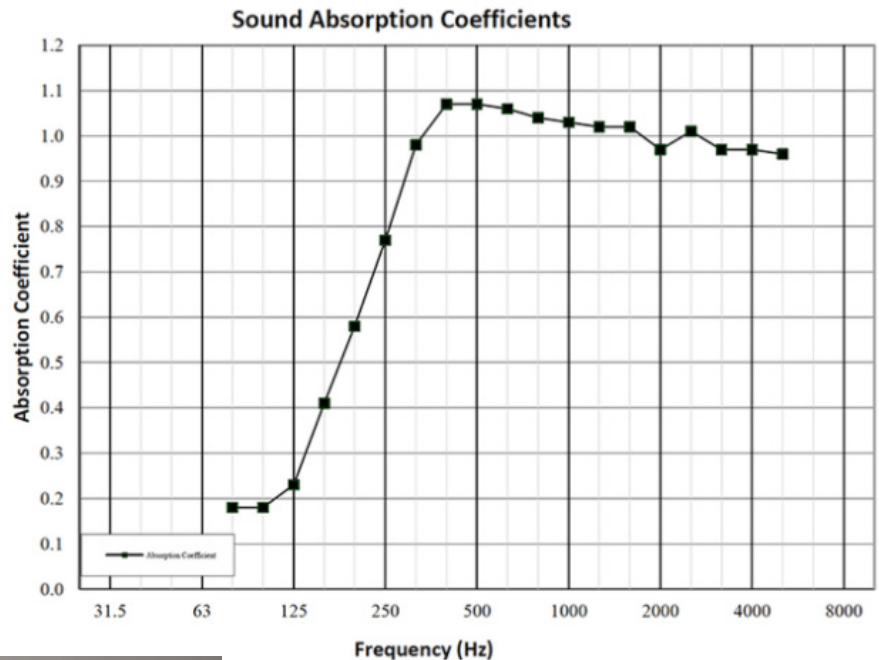
Volunteers of America, NYC

## SWELL SPECIFICATIONS

- **Content:** Substrate, Plywood, & Felt
- **Panel Widths:** 2", 4", 6", 8", & 10"
- **Maximum Length:** 120"
- **Mounting Options:** Quick grab formula and concealed nails
- **Lead Time:** 4-6 weeks
- **Acoustics:** ASTM C 423: NRC->0.9 SAA 1.0
- **Fire Rating:** California Technical Bulletin 117-2013; NFPA 260 + UFAC Class 1
- **Colorfastness:** AATCC-16 (40 Hours) 4 Minimum
- **Environmental:** Rapidly renewable and compostable. Certified on the EU ecolabel.

- **Panel Sizes:**

Width	Thickness
2	2
4	2 <sup>1/4</sup>
6	2 <sup>1/2</sup>
8	2 <sup>3/4</sup>
10	3 <sup>1/4</sup>



Volunteers of America, NYC

## CEILING BAFFLE SYSTEM

DFB's Ceiling Baffle System offers both a decorative and highly functional solution to noise reduction. This application is suspended from the ceiling, and can be installed in a multitude of patterns.



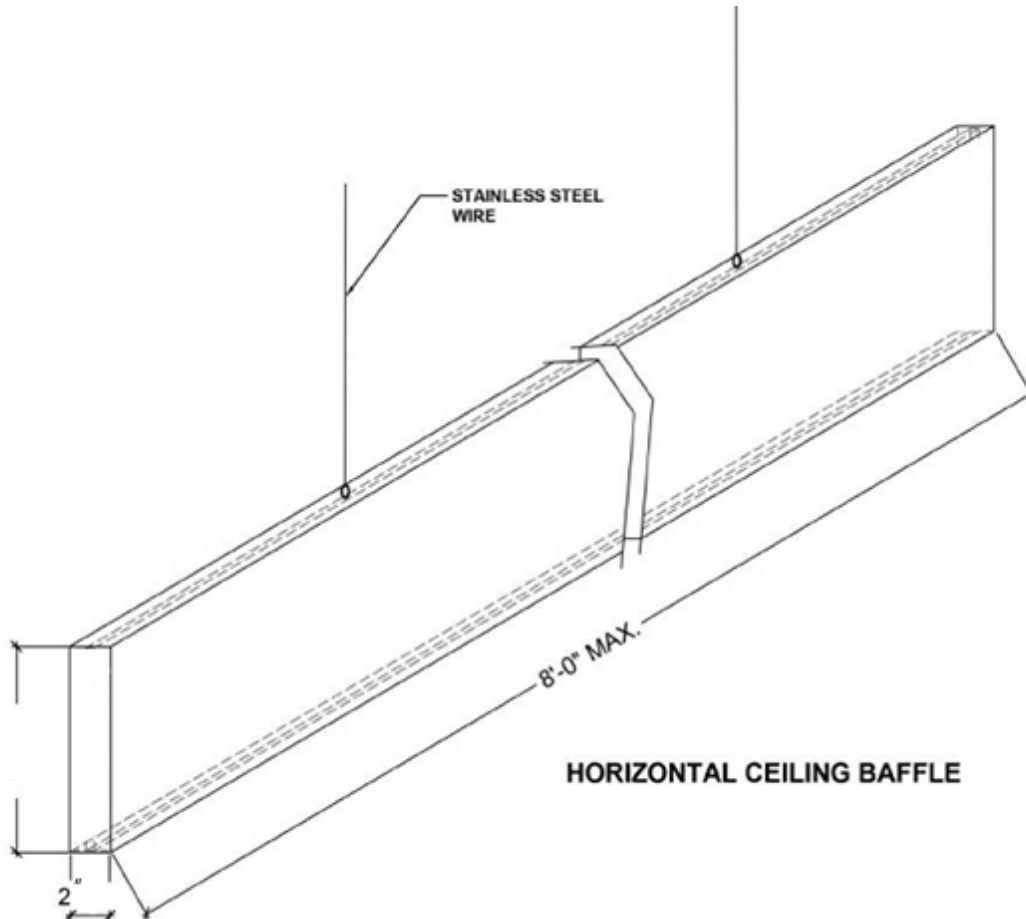
United Technology,  
Dumbo, Brooklyn



Mediamath, NYC

## CEILING BAFFLE SPECIFICATIONS

- **Substrate(s):** Quiet-Core™ (Acoustical)
- **Panel Thickness:** 1" or 2"
- **Maximum Height:** 48"
- **Maximum Length:** 120"
- **Mounting Options:** Panels & ceiling mounting system
- **Lead Time:** 4-6 weeks
- **Acoustics:** ASTM C 423: NRC-1.0 SAA 1.0
- **Fire Rating:** CA 117-2013, NFPA 260, UFAC Class 1



## PLANK PANELS

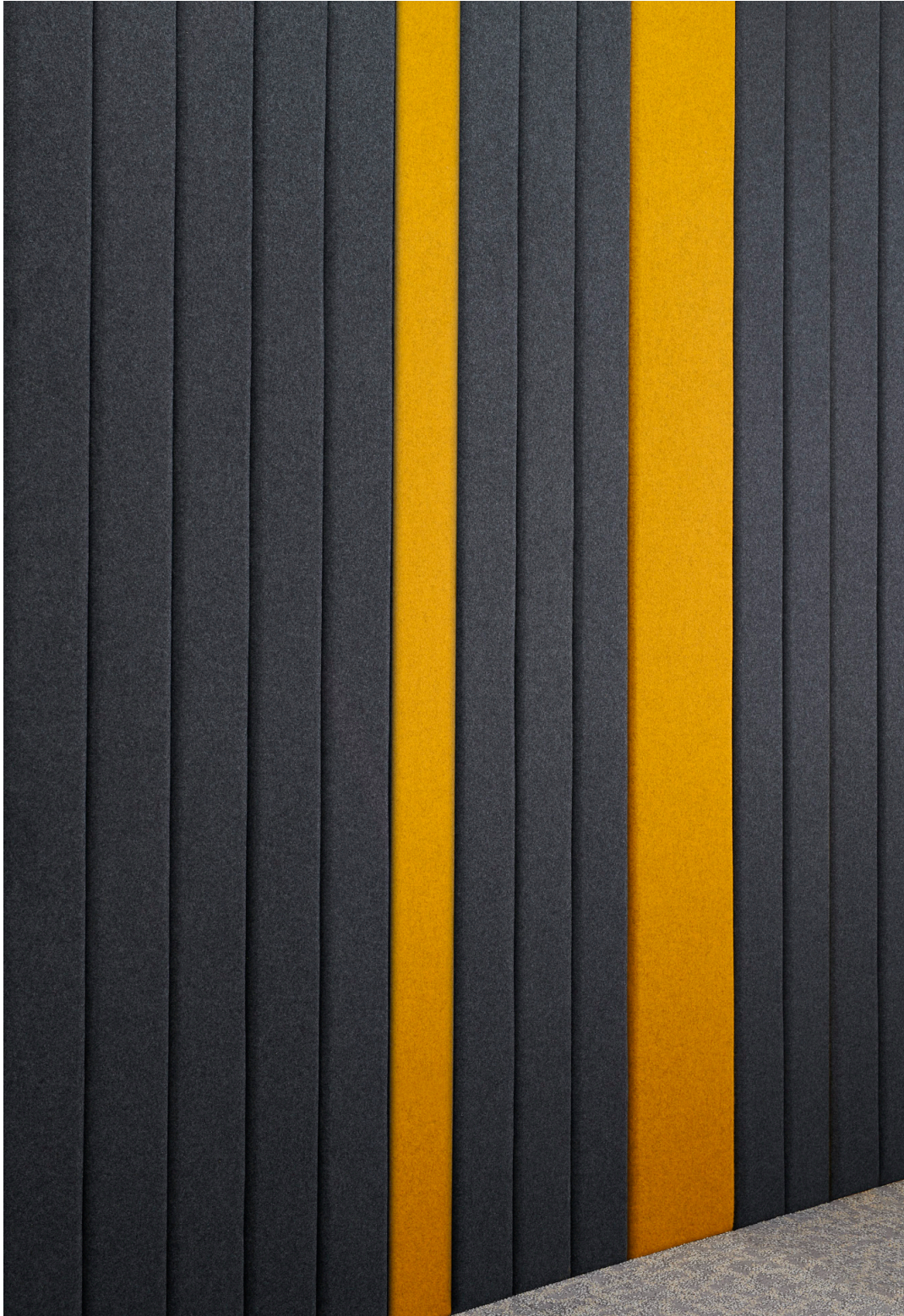
These fabric wrapped, acoustical panels are distinguished by their rounded edges, and can be configured using our standard 5" and 10" wide panels.

## SPECIFICATIONS

- **Substrate(s):** Quiet-Core™ (Acoustical)
- **Panel Widths:** 5" & 10". Custom sizes available
- **Maximum Length:** 120"
- **Mounting Options:** Quick grab formula and concealed nails
- **Lead Time:** 4 weeks
- **Acoustics:** 0.8 NRC
- **Fire Rating:** In accordance with ASTM E84, fabric wrapped panels achieve a Class A rating, passing NFPA 701
- **Environmental:** Rapidly renewable and compostable.

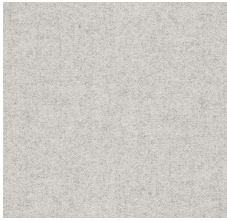


Long Island City, NY

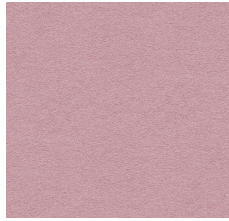


Long Island City, NY

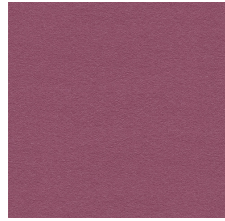
## GRADED IN FABRICS



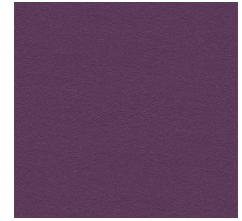
Dartmouth



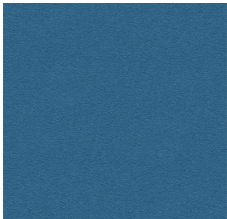
Stanford



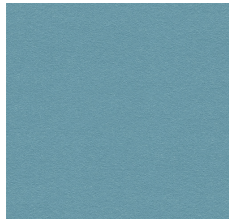
Barnard



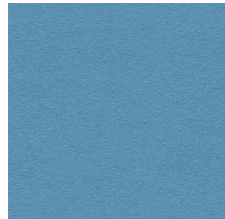
Holyoke



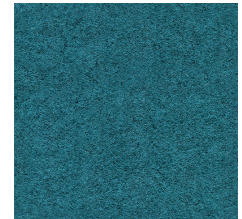
Vassar



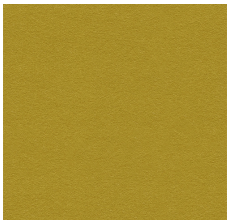
Woodcroft



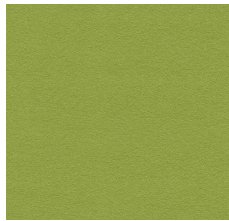
Marymount



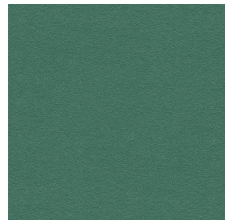
Abertay



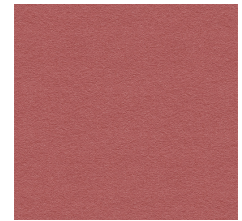
Eynesbury



Vassar



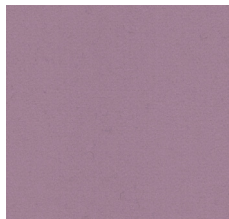
Montcrest



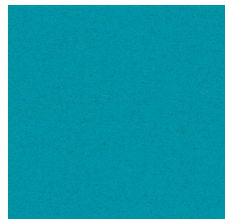
Barlborough



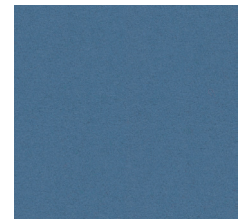
Scottsdale



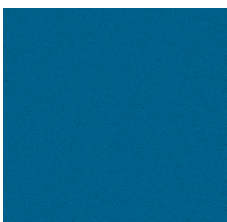
Sheffield



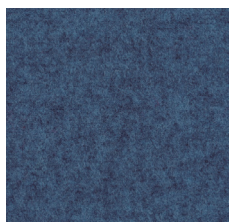
Aston



Manchester



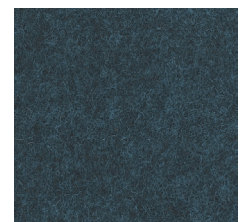
Knightsbridge



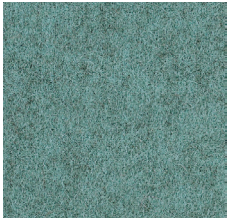
Newcastle



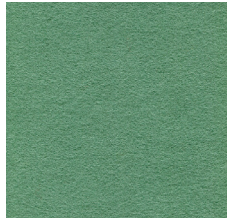
Oxford



Glenalmond



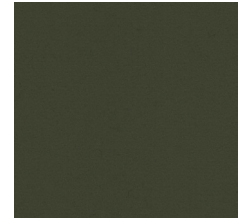
Latymer



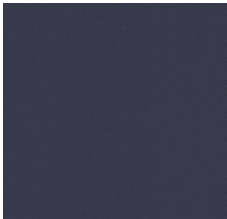
Tyndale



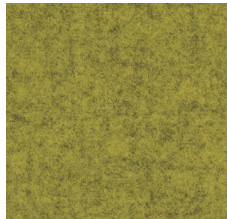
Cardiff



Glasgow



Edinburgh



Ulster



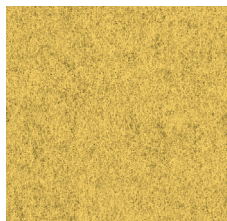
Camphill



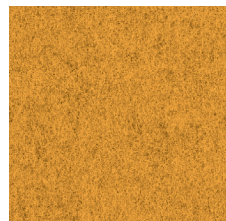
Bryanson



Newport



Dunhurst



Wesley



St. Andrews



Fairfield



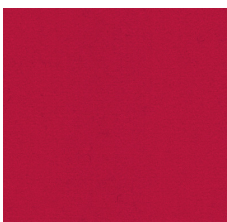
Goldsmith



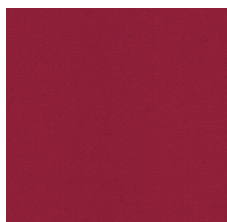
Edgehill



Handcross



Oriel



Wellington



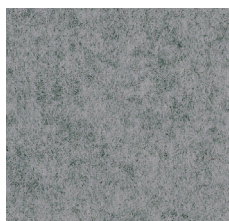
Magdalene



Silverdale



Plymouth



Surrey



Aberlour



Trevelyan



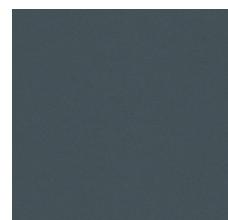
Bromsgrove



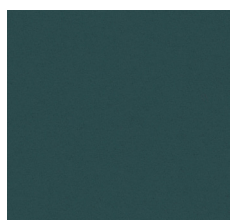
Kingsmead



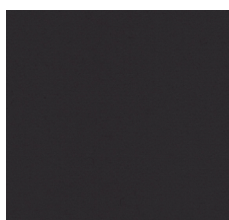
Silcoates



Winchester



Hull



Napier

