



NOISE + SOUND

With the rise of an open office concept, these interactive spaces promote collaboration and teamwork, and in turn, increase the level of noise. Studies indicate that unwanted noise causes stress, and other health ramifications, further emphasizing the importance of acoustical solutions in the workplace.

ACOUSTICAL SOLUTIONS: PANEL-TEX™

Panel-Tex™ by DFB are instant acoustical panels tailored to fit any wall and desired space, due to the products customizable sizes. DFB offers a range of products under our Panel-Tex™ umbrella, all of which have proven noise reduction characteristics.

DFB determines the acoustical value of our products through Noise Reduction Coefficient (NRC), which measures the amount of sound absorbed when it strikes a particular surface. These products achieve a NRC rating from .30 to .90 for prefabricated panels, and 1.0 for our fabric wrapped Ceiling Baffles.

MADE IN NYC™ All panels are manufactured at our facility in Long Island City, ensuring a quick lead time under tight deadlines.





FABRICS

DFB's Panel-Tex™ System is compatible with a variety of fabrics, including, but not limited to, felt, polyester, & Carnegie Xorel. Panels are prefabricated per project specifications, and installed by DFB technicians.

SUBSTRATES

DFB offers both acoustical or tackable substrates for our Panel-Tex™ System. Whether you require panels that absorb sound, or panels where a long lasting tackable surface is needed, we have the solution that is best for you.



Delos Headquarters

PANEL-TEX™ VERSATILITY



Conde Naste
Leather Wrapped Panels



Two Sigma
Custom Herringbone Panels



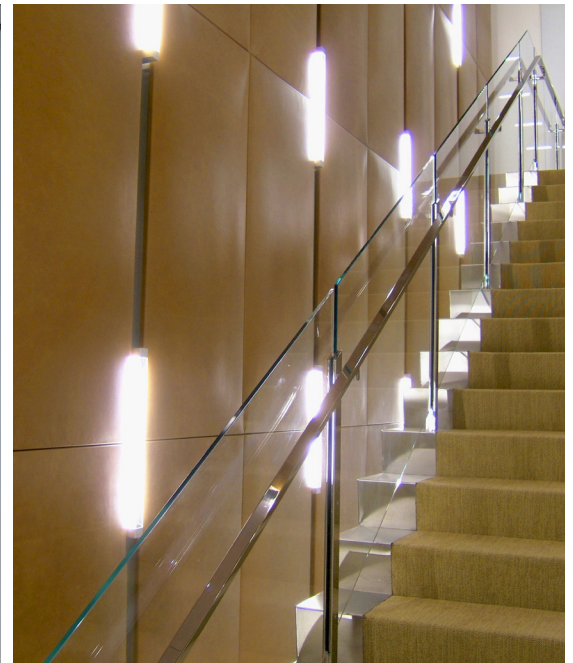
Mediamath
Fabric Wrapped Panels



650 5th Avenue
Grid Panels, Metal trim by others



Morgan Stanley
Fabric Wrapped Panels



Altria
Leather Wrapped Panels

TRADITIONAL WALL PANEL SPECIFICATIONS

- **Substrate(s):** Quiet-Core™ (Acoustical) & Mi-Core™ (Tackable)
- **Panel Thickness:** Quiet-Core™: 3/4" & 1"
Mi-Core™: 1/2" & 3/4"
- **Maximum Sizes:** 1" Quiet-Core™ & 3/4" Mi-Core™: 48" x 120"
3/4" Quiet-Core™ & 1/2" Mi-Core™: 48" x 96"
- **Mounting Options:** Quick grab formula and concealed nails
- **Lead Time:** 4 weeks
- **Acoustics:** Quiet-Core™ reaches a 0.8 NRC rating when wrapped in fabric
Mi-Core™ reaches a 0.3 NRC rating
- **Fire Rating:** In accordance with ASTM E84, fabric wrapped panels achieve a Class A rating, passing NFPA 701

SUBSTRATE(S)

QUIET-CORE™

This acoustical substrate is made from inorganic glass mineral wool, and has excellent sound absorption characteristics.

MI-CORE™

This tackable substrate from DFB offers moderate acoustical properties. Mi-Core™ is constructed with inorganic minerals and fibers, which makes it resistant to moisture and warping. This durable substrate is recommended for high traffic areas.



SWELL CONTOURED PANELS

Our SWELL Panels fall under the Panel-Tex™ umbrella offering unique elliptical shaped panels that can be configured in a variety of patterns, using a combination of standard and custom sizes. Standard widths range from 2" to 10", and can be mixed and matched allowing for maximum creativity. To further enhance your project, pair and install our SWELL panels with our traditional prefabricated panels for a highly acoustical room.



AMC Networks



Volunteers of America

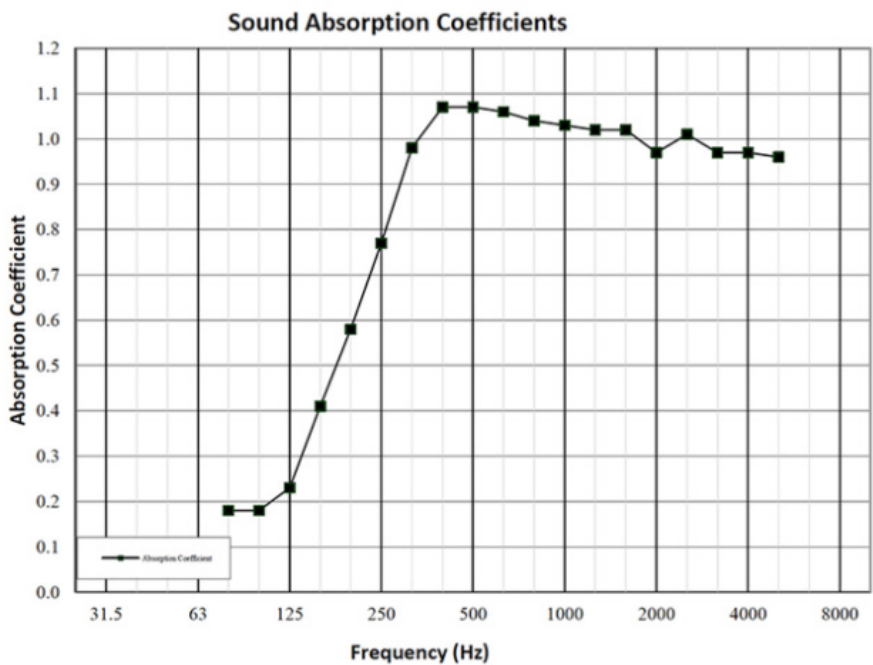


Volunteers of America

SWELL SPECIFICATIONS

- **Content:** Substrate, Plywood, & Felt
- **Panel Widths:** 2", 4", 6", 8", & 10"
- **Maximum Length:** 120"
- **Mounting Options:** Quick grab formula and concealed nails
- **Lead Time:** 4-6 weeks
- **Acoustics:** ASTM C 423: >0.9 NRC, 1.0 SAA.
- **Fire Rating:** California Technical Bulletin 117-2013; NFPA 260 + UFAC Class 1
- **Colorfastness:** AATCC-16 (40 Hours) 4 Minimum
- **Environmental:** Rapidly renewable and compostable.
- **Panel Sizes:**

Width	Thickness
2	2
4	2 ^{1/4}
6	2 ^{1/2}
8	2 ^{3/4}
10	3 ^{1/4}



Volunteers of America



IEX Group

CEILING BAFFLE SYSTEM

DFB's Ceiling Baffle System offers both a decorative and highly functional solution to noise reduction. This system is composed of individual acoustical baffles, that are suspended from the ceiling, and installed in a multitude of patterns.



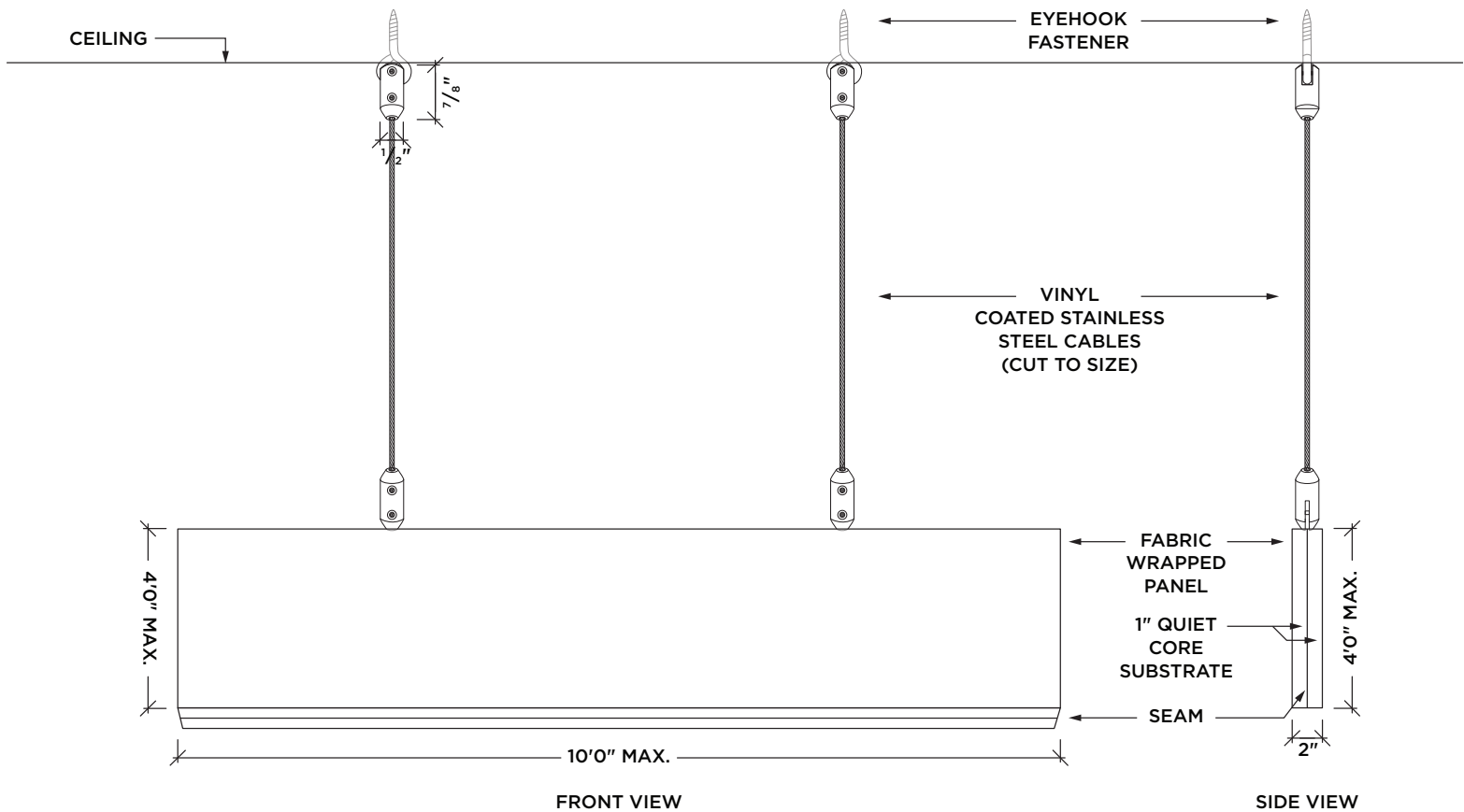
United Technology



Mediamath

CEILING BAFFLE SPECIFICATIONS

- **Substrate(s):** Quiet-Core™ (Acoustical)
- **Panel Thickness:** 2"
- **Maximum Height:** 48"
- **Maximum Length:** 120"
- **Mounting Options:** DFB's Ghost Hardware, which includes Vinyl Coated Stainless Steel Cables. Also available in white and black Vinyl Coated Stainless Steel.
- **Lead Time:** 3 weeks
- **Acoustics:** ASTM C 423: 1.0 NRC, 1.0 SAA
- **Fire Rating:** CA 117-2013, NFPA 260, UFAC Class 1
- **Custom:** Available upon request



HORIZONTAL CEILING BAFFLE WITH VINYL COATED STAINLESS STEEL CABLES BY DFB

PLANK PANELS

These fabric wrapped, acoustical panels are distinguished by their rounded edges, and can be configured using our standard 5" and 10" wide panels.

SPECIFICATIONS

- **Substrate(s):** Quiet-Core™ (Acoustical)
- **Panel Widths:** 5" & 10". Custom sizes available
- **Maximum Length:** 120"
- **Mounting Options:** Quick grab formula and concealed nails
- **Lead Time:** 4 weeks
- **Acoustics:** 0.8 NRC
- **Fire Rating:** In accordance with ASTM E84, fabric wrapped panels achieve a Class A rating, passing NFPA 701
- **Environmental:** Rapidly renewable and compostable.

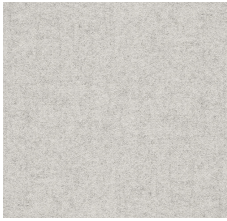


Long Island City, NY

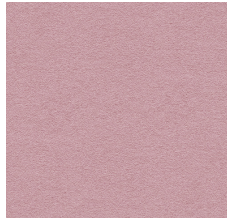


Long Island City, NY

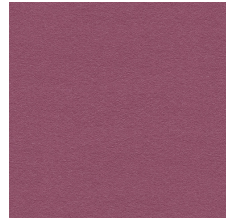
GRADED-IN FELT



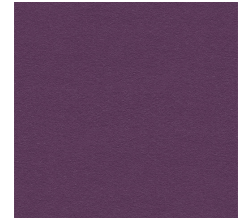
Dartmouth



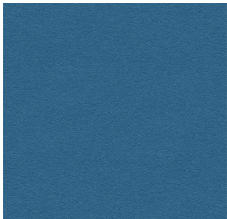
Stanford



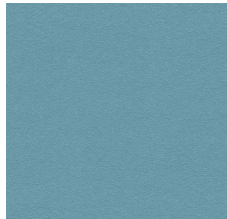
Barnard



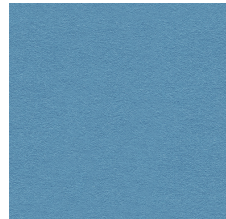
Holyoke



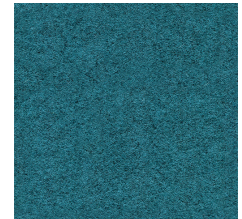
Vassar



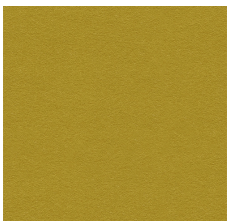
Woodcroft



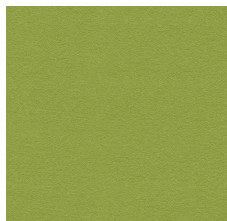
Marymount



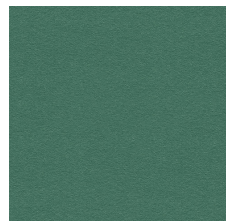
Abertay



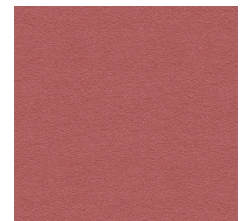
Eynesbury



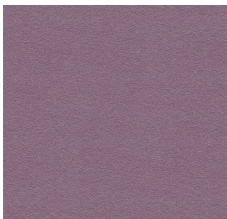
Vassar



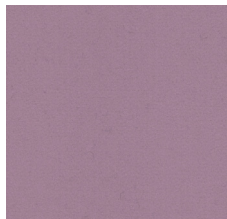
Montcrest



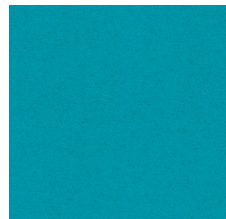
Barlborough



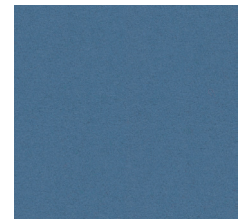
Scottsdale



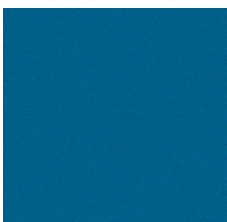
Sheffield



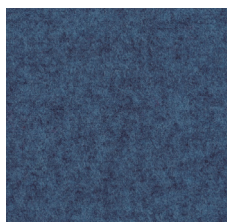
Aston



Manchester



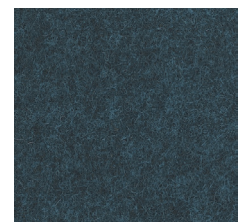
Knightsbridge



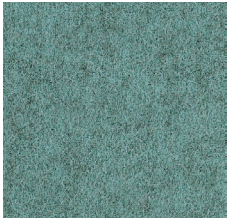
Newcastle



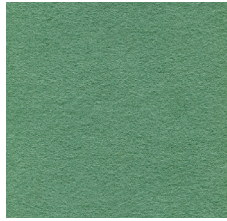
Oxford



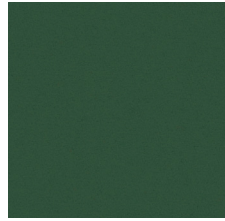
Glenalmond



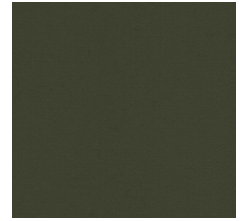
Latymer



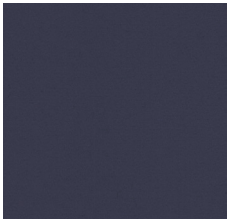
Tyndale



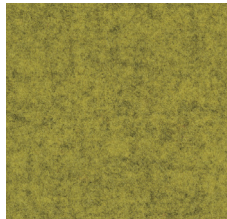
Cardiff



Glasgow



Edinburgh



Ulster



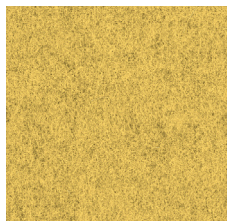
Camphill



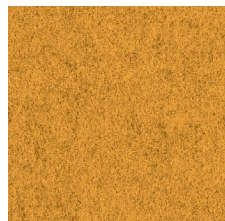
Bryanson



Newport



Dunhurst



Wesley



St. Andrews



Fairfield



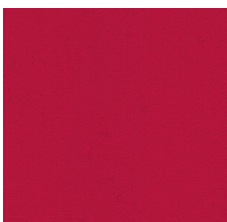
Goldsmith



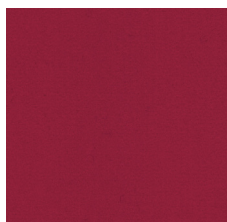
Edgehill



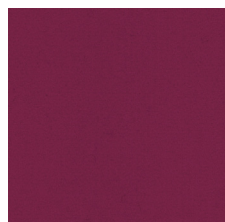
Handcross



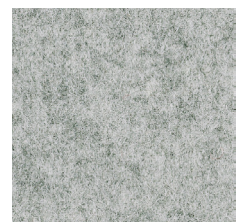
Oriel



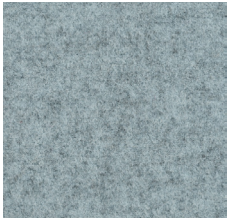
Wellington



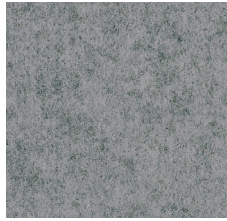
Magdalene



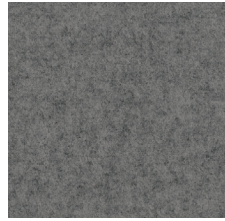
Silverdale



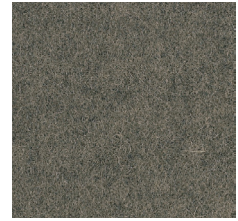
Plymouth



Surrey



Aberlour



Trevelyan



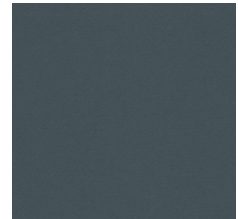
Bromsgrove



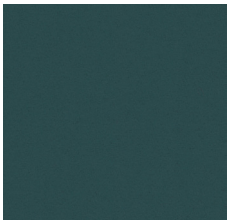
Kingsmead



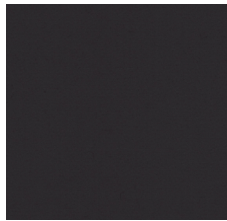
Silcoates



Winchester



Hull



Napier

