

**DFB**

**SOUND OUT<sup>TM</sup>  
LANE**

[sales@dfbsales.com](mailto:sales@dfbsales.com)

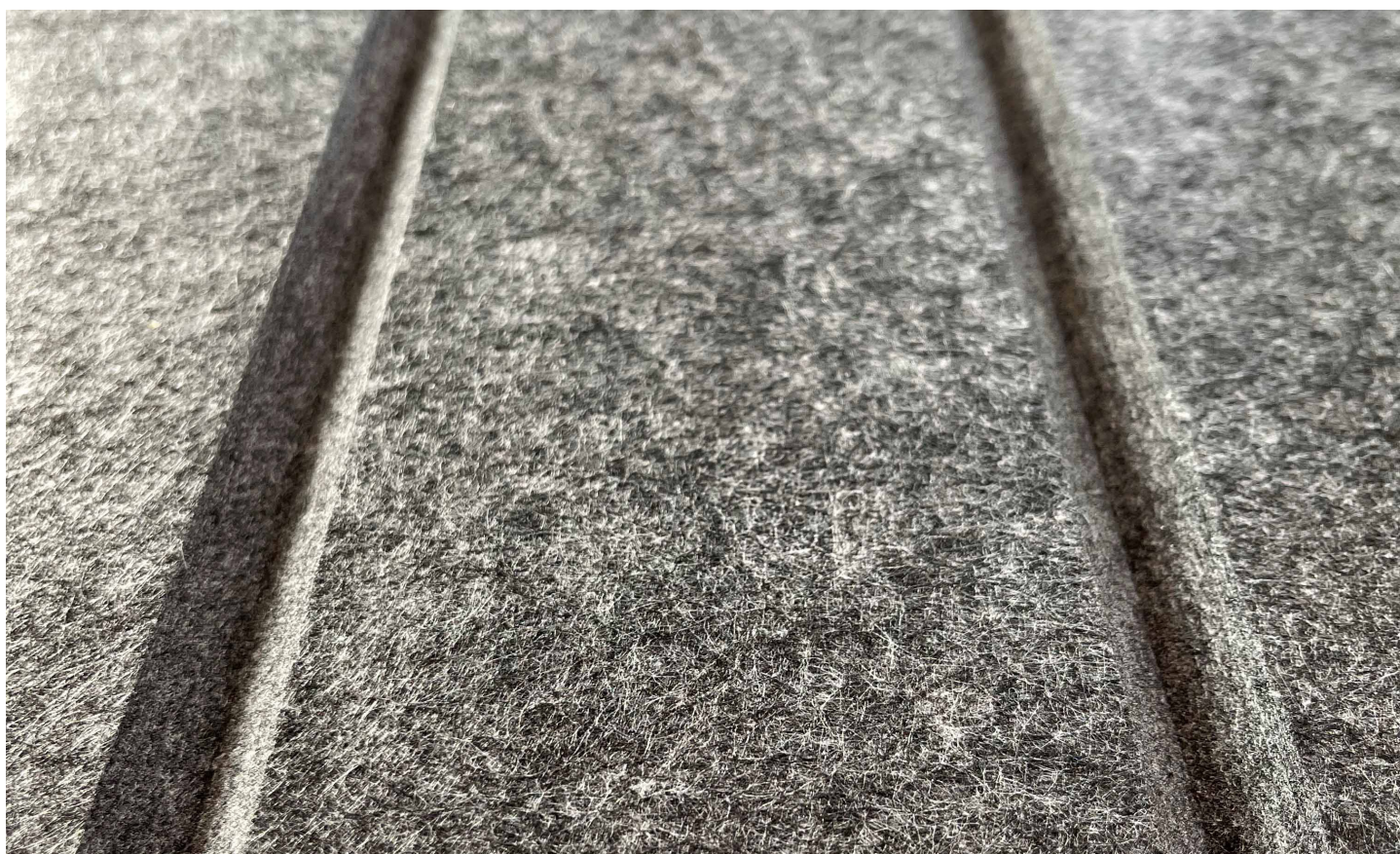
[dfbsales.com](http://dfbsales.com)



## SOUND OUT™ LANE

Linear grooves are carved into up to 2 layers of PET creating unique patterns. These acoustical panels are available in a single color or two colors, and are offered in various custom patterns.

- **Product:** Sound Out™ Lane
- **Composition:** 100% Polyester Fiber (PET)
- **Panel Thickness:** 1/2, 1 or 2 inch (~12, 24, 48mm)
- **Width:** 39" (recommended maximum width)
- **Height:** 94"
- **Lead Time:** 6-8 weeks
- **Acoustics:** ASTM C 423: 1" 0.8 NRC, 0.83 SAA; 1/2" 0.45 NRC, 0.43 SAA
- **Environmental:** Contains 100% previously recycled polyester fiber
- **Custom:** Custom patterns & sizes available upon request





## KP Colors

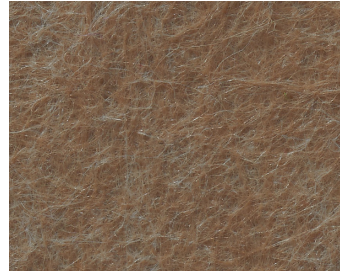
The KP colors listed below are the base panel layer, while the KF colors are the top felt layer. Lane can be designed using a single color (KP colors) or two colors (KP + KF). Select your colors and then select your pattern.



KP-04



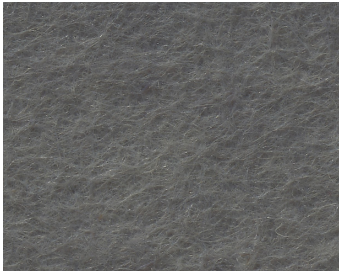
KP-05



KP-06



KP-10



KP-11



KP-12



KP-13



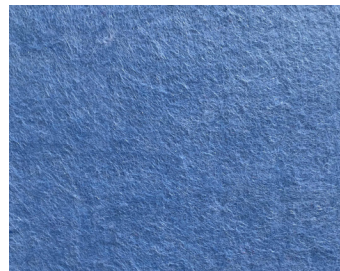
KP-16



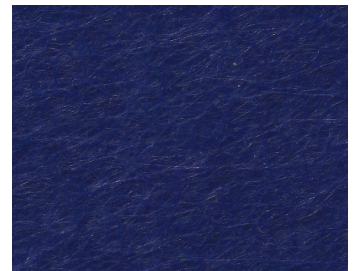
KP-17



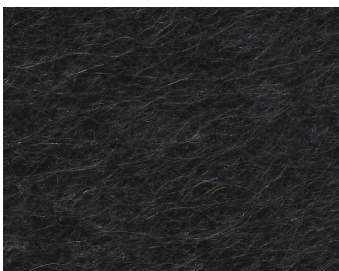
KP-21



KP-22



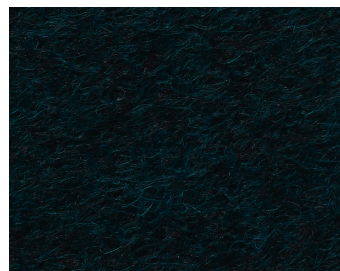
KP-23



KP-28



KP-33

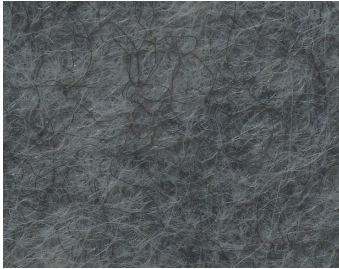


KP-34

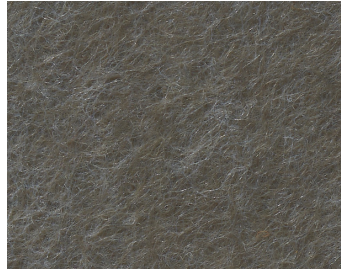


KP-36

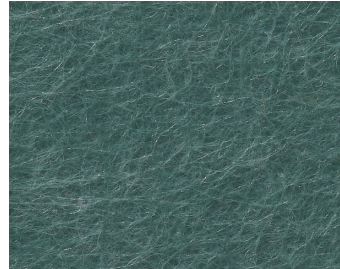




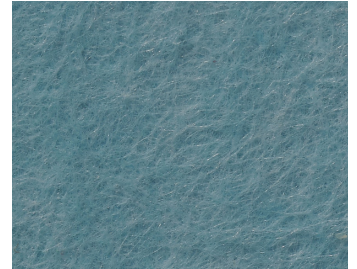
KP-38



KP-39



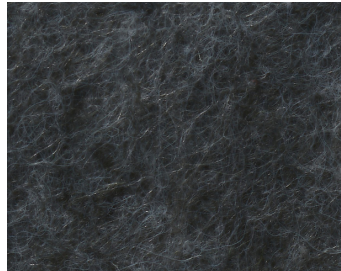
KP-40



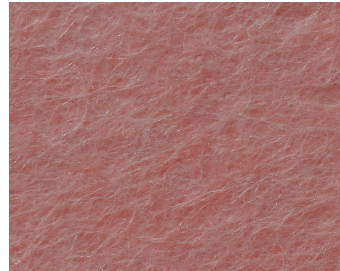
KP-41



KP-42



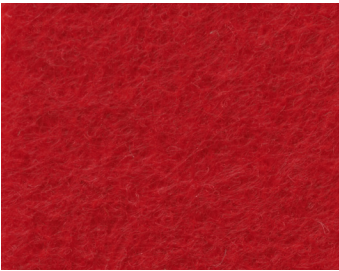
KP-45



KP-46



KF Colors



KF-01



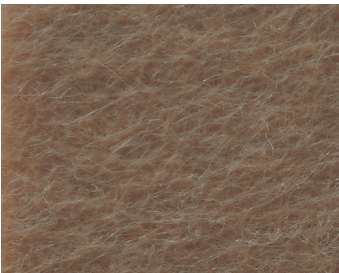
KF-02



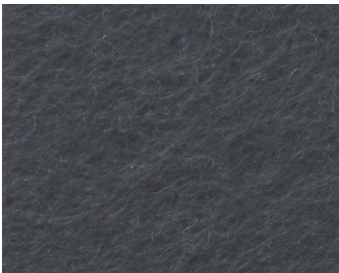
KF-04



KF-10



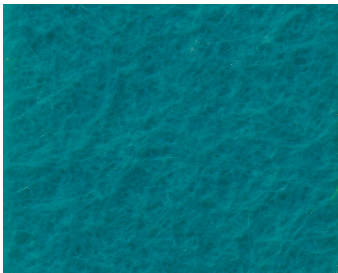
KF-11



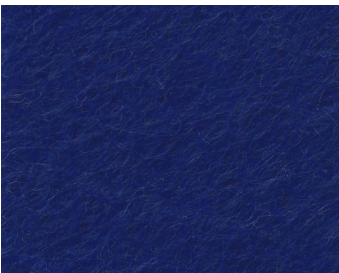
KF-12



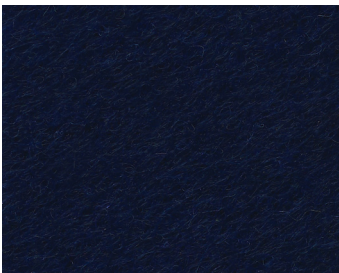
KF-16



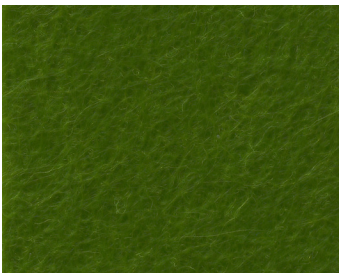
KF-18



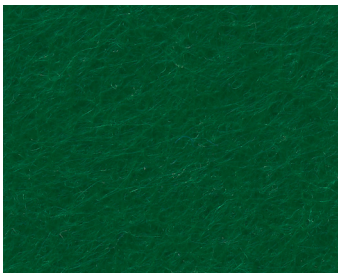
KF-19



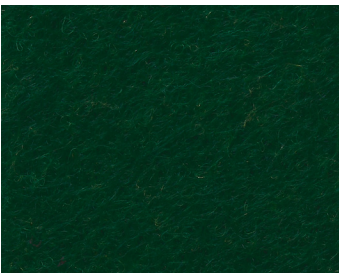
KF-20



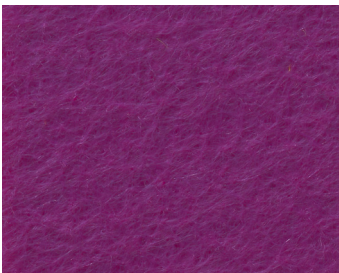
KF-24



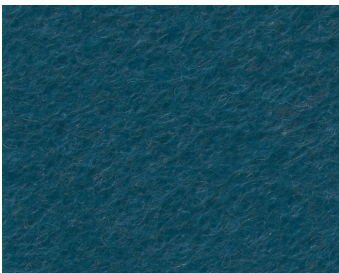
KF-25



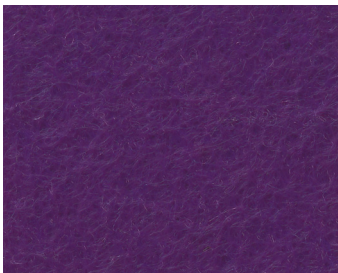
KF-26



KF-27

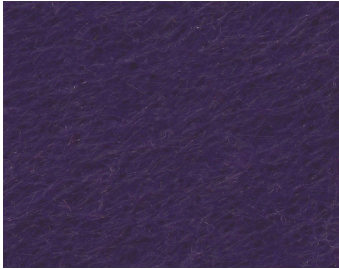


KF-28



KF-29

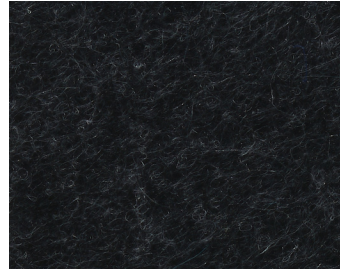




KF-30



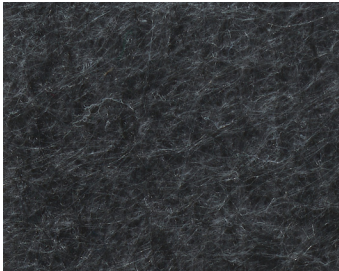
KF-31



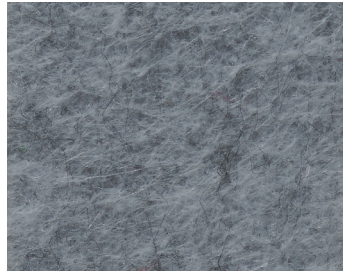
KF-32



KF-33



KF-34



KF-35



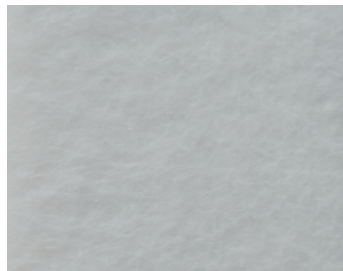
KF-36



KF-37



KF-38



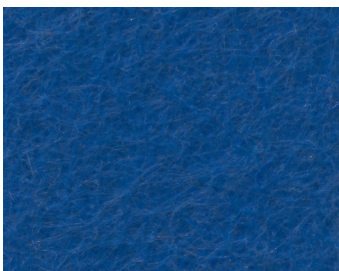
KF-39



KF-40



KF-43



KF-44



KF-47



KF-48