

Track-TEX™ TS (Tuck System) is a site installed wall & ceiling upholstery system, manufactured and installed by DFB.

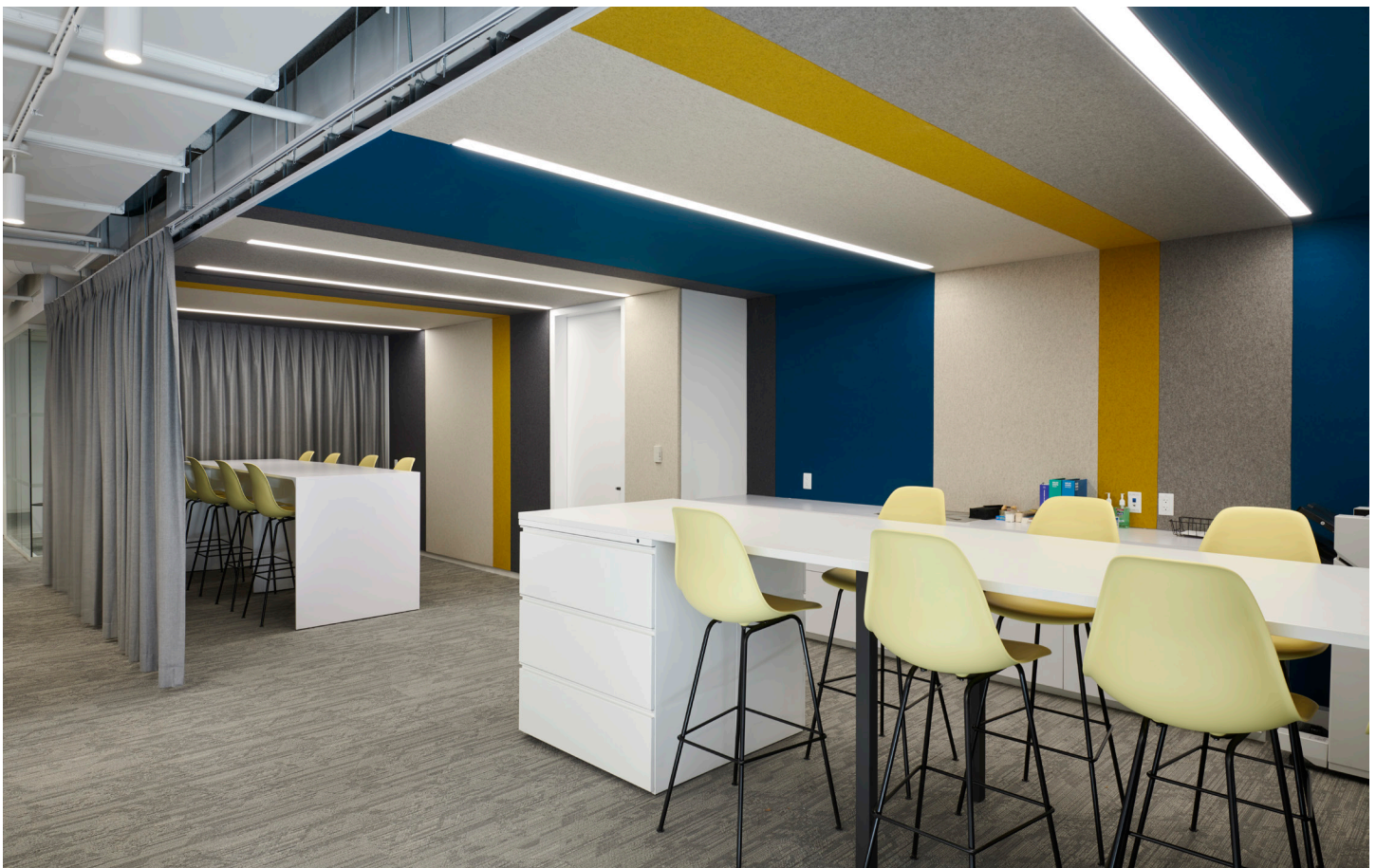
## FEATURES & BENEFITS

- Ideal for grid configurations, railroad panels, curved walls, oversized panels, seamless panels, or ceiling configurations.
- Ability to mix acoustical substrate with tackable surfaces.
- Can be reupholstered.
- Ability to align large patterns.
- Compatible with most specified fabrics.
- When specified, DFB can install wood used for picture blocking.

## SUSTAINABILITY

For LEED certified building projects, Track-TEX™ provides:

- Sustainable manufacturing through processes that minimize the use of non-renewable energy.
- Track-TEX™ TS panels are made locally in New York City.



## SPECIFICATIONS

- **Content:** Substrate, PVC Free Track, & Felt
- **Panel Widths:** Custom (Built to spec)
- **Lead Time:** 4 weeks
- **Fabric:** Compatible with any felt fabric
- **Acoustics:** ASTM C 423: 0.8 NRC
- **Fire Rating:** California Technical Bulletin 117-2013; NFPA 260 + UFAC Class 1
- **Colorfastness:** AATCC-16 (40 Hours) 4 Minimum
- **Environmental:** Rapidly renewable and compostable





## SUBSTRATE(S)

Track-TEX™ is compatible with three different substrates:

### QUIET-CORE™

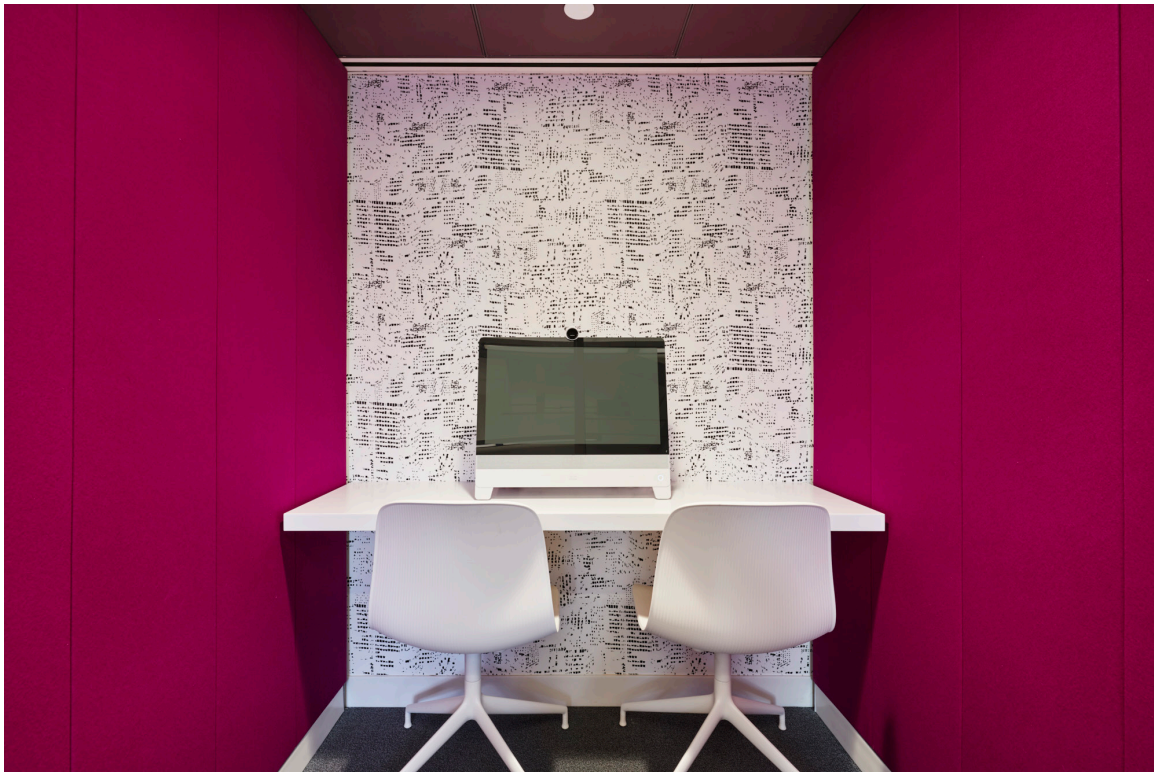
This acoustical substrate is made from inorganic glass mineral wool, and has excellent sound absorption characteristics (0.8 NRC).

### QUIET-CORE PLUS™

This substrate provides both an acoustical and tackable solution, as it's constructed with an extra 1/8" layer fastened to the face of our standard Quiet-Core™ panel (0.85 NRC).

### MI-CORE™

Tackable substrate by DFB, offering moderate acoustical properties (0.35 NRC).



## DETAIL DRAWINGS

