



PET BY DFB

Containing 100% recycled material, DFB's Sound Out™ wall and ceiling applications are safe, non-toxic, and non-allergenic.

DFB Sales
2107 Borden Avenue
Long Island City, NY 11101
sales@dfbsales.com
dfbsales.com

DFB



PET BY DFB

Sound Out Panels are lightweight, and designed to greatly reduce noise. This multiuse panel system is offered in a variety of shapes, colors, and patterns. Compared to traditional panels, Sound Out Panels are lower in weight, therefore easier to handle and install.

Sound Out Panels are highly customizable, with the ability to print patterns directly onto the substrate, while still maintaining the acoustical properties. Panels can be mixed and matched to create various color combinations.

Containing 100% recycled material, Sound Out Panels are safe, non-toxic, and non-allergenic.

Specifications

- **Product:** Sound Out Panels
- **Composition:** 100% Polyester Fiber (PET)
- **Panel Thickness:** 1/2, 1 or 2 inch (~12, 24, 48mm)
- **Maximum Width:** 4 ft
- **Maximum Length:** 8 ft custom sizes available up to 10 feet
- **Lead Time:** 6-8 weeks
- **Fire Rating:** ASTM E84 Class A
- **Acoustics:** ASTM C 423: 1" 0.8 NRC, 0.83 SAA; 1/2" 0.45 NRC, 0.43 SAA
- **Environmental:** Contains 100% previously recycled polyester fiber
- **Custom:** Custom sizes and shapes available upon request

Color Options



DS-01



DS-02



DS-03



DS-04



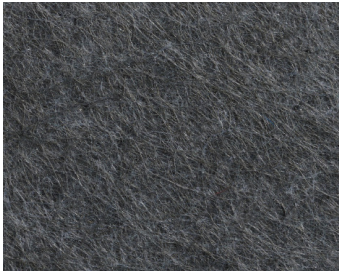
DS-05



DS-06



DS-07



DS-08



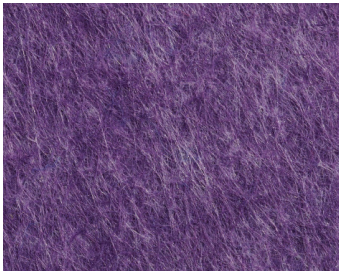
DS-09



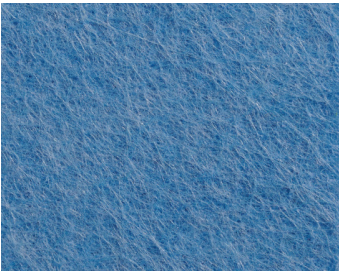
DS-10



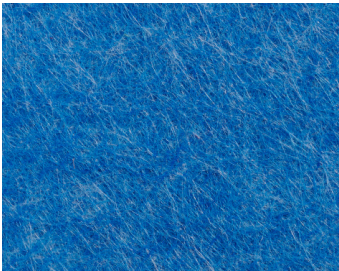
DS-11



DS-12



DS-14



DS-15



DS-16



DS-17



DS-18



DS-21



DS-26



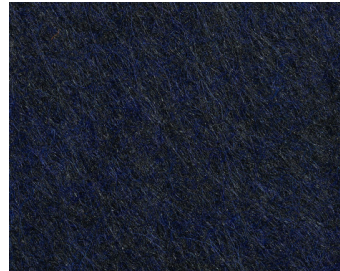
DS-28



DS-31



DS-32



DS-39



DS-40



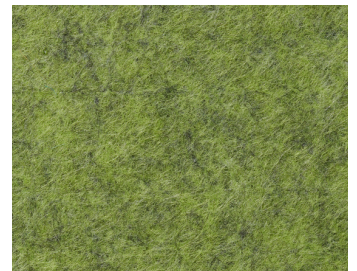
DS-41



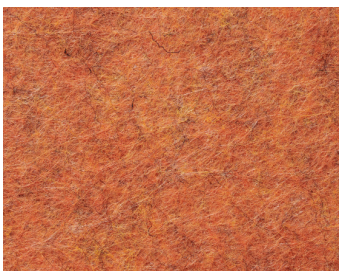
DS-42



DS-43



DS-44



DS-45



DS-46



DS-47



DS-49



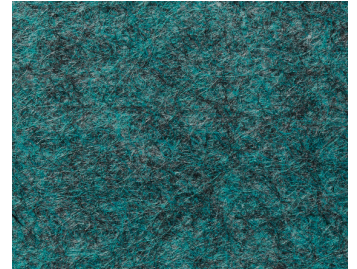
DS-50



DS-51



DS-52



DS-53



DS-442



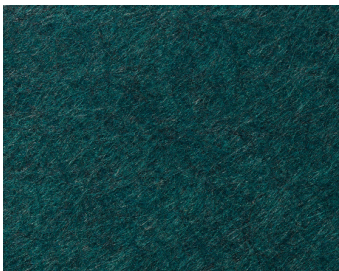
DS-1801



DS-1802



DS-1804



DS-1806



DS-1815



DS-1816



DS-1818



DS-1819

DFB

SOUND OUT™
TETRIS

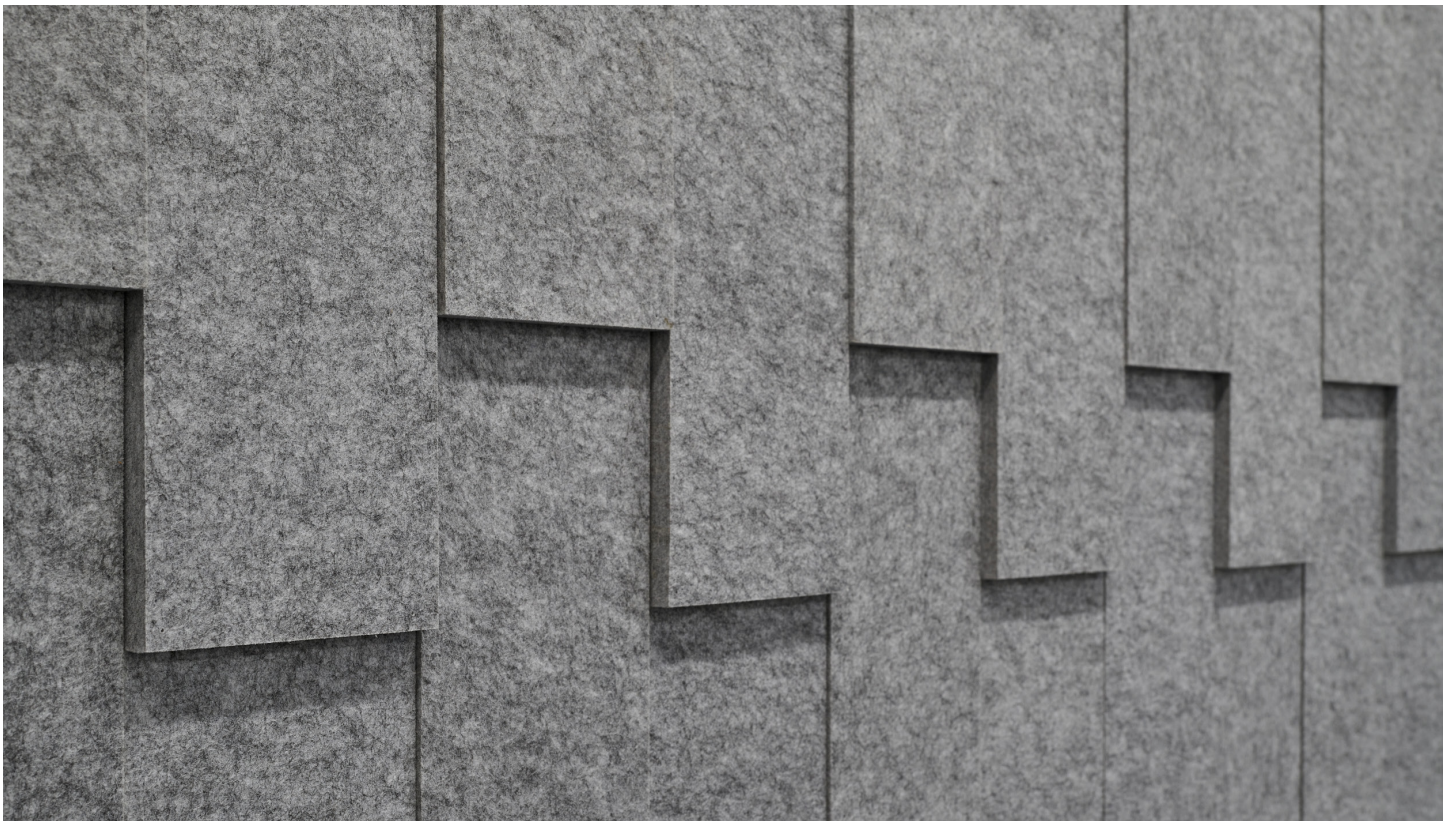
dfbsales.com
sales@dfbsales.com

SOUND OUT™ TETRIS

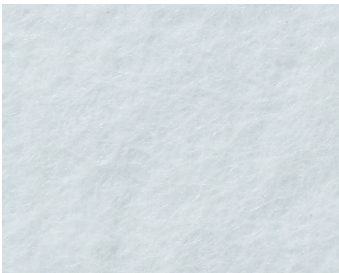
Just as its name describes, our new PET tiles fit perfectly together like Tetris, while adding dimension to any wall. This element of design is visible no matter the direction you're viewing the panels.

While standard Sound Out™ Tetris showcases 24x5" Plank pieces that are installed vertically, Tetris can be customized, with the ability to "rotate & drop" panels into horizontal configurations, similar to the game.

Product:	Sound Out™ Tetris
Composition:	100% Polyester Fiber (PET) + wood backing
Panel Thickness:	1/2 (~12mm)
Panel Depth:	Side with wood backing: 3/4" off wall, side without backing 1/2"
Panel Size:	24x5"
Panel Orientation:	Vertical (as seen) or Horizontal
Lead Time:	6-8 weeks
Acoustics:	ASTMC 423: 1/2" 0.33 NRC, 0.30 SAA
Environmental:	Contains 100% previously recycled polyester fiber
Custom:	Custom sizes available upon request



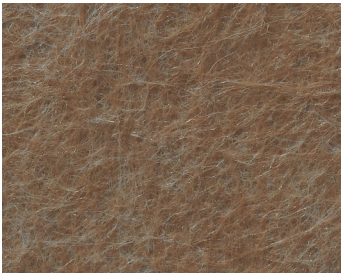
Color Options



KP-04



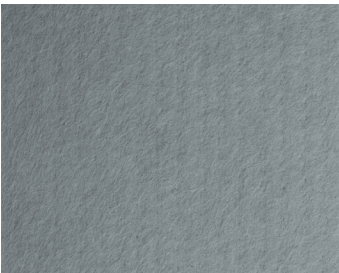
KP-05



KP-06



KP-10



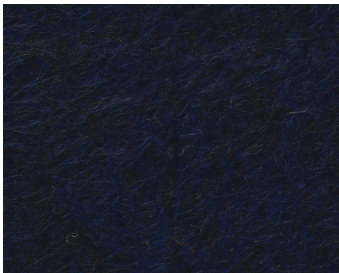
KP-11



KP-12



KP-13



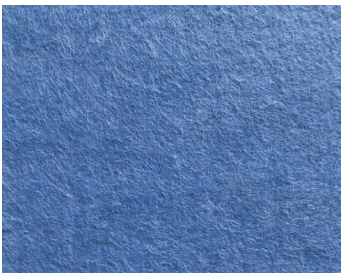
KP-16



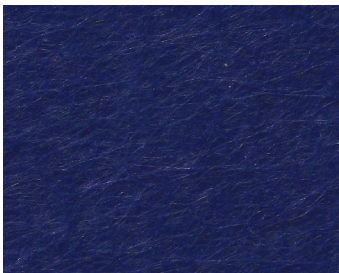
KP-17



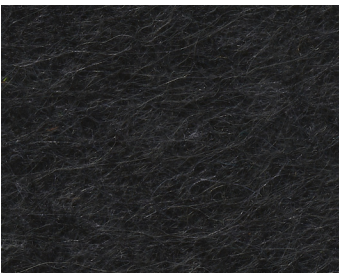
KP-21



KP-22



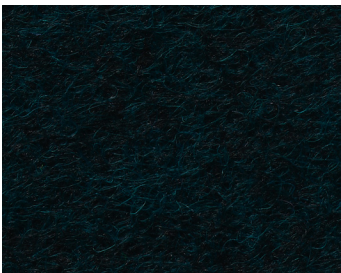
KP-23



KP-28



KP-33

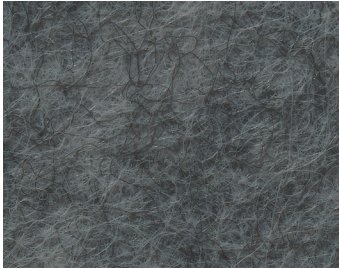


KP-34

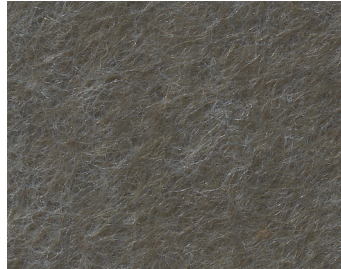


KP-36

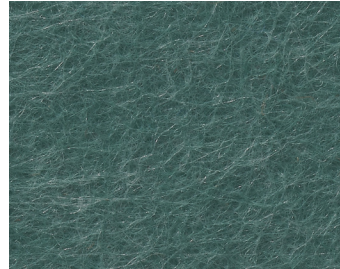
Always request physical samples prior to ordering to ensure color accuracy.



KP-38



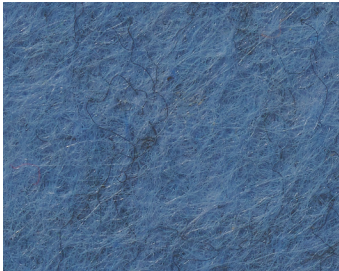
KP-39



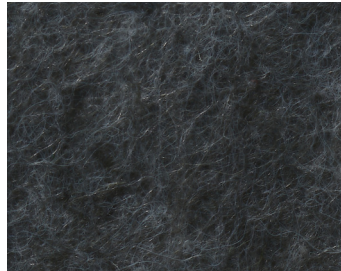
KP-40



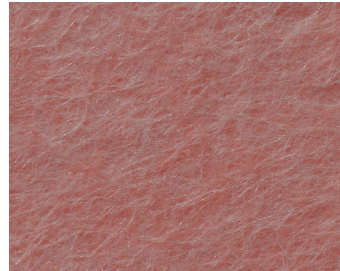
KP-41



KP-42



KP-45



KP-46

Always request physical samples prior to ordering to ensure color accuracy.

DFB

**SOUND OUT[®]
CURRENT**

sales@dfbsales.com

dfbsales.com



SOUND OUT™ CURRENT

Acoustical PET wall covering featuring curved fabric reveals that protrude outward creating an organic pattern. Sound Out™ Current is available in up to two colors.

- **Product:** Sound Out™ Current
- **Composition:** 100% Polyester Fiber (PET)
- **Panel Thickness:** 1"
- **Panel Size:** 36 x 96"
- **Lead Time:** 6-8 weeks
- **Acoustics:** ASTM C 423: 1" 0.8 NRC, 0.83 SAA; 1/2" 0.45 NRC, 0.43 SAA
- **Environmental:** Contains 100% previously recycled polyester fiber
- **Custom:** Custom sizes and shapes available upon request



DFB

**SOUND OUTTM
MERIDIAN**

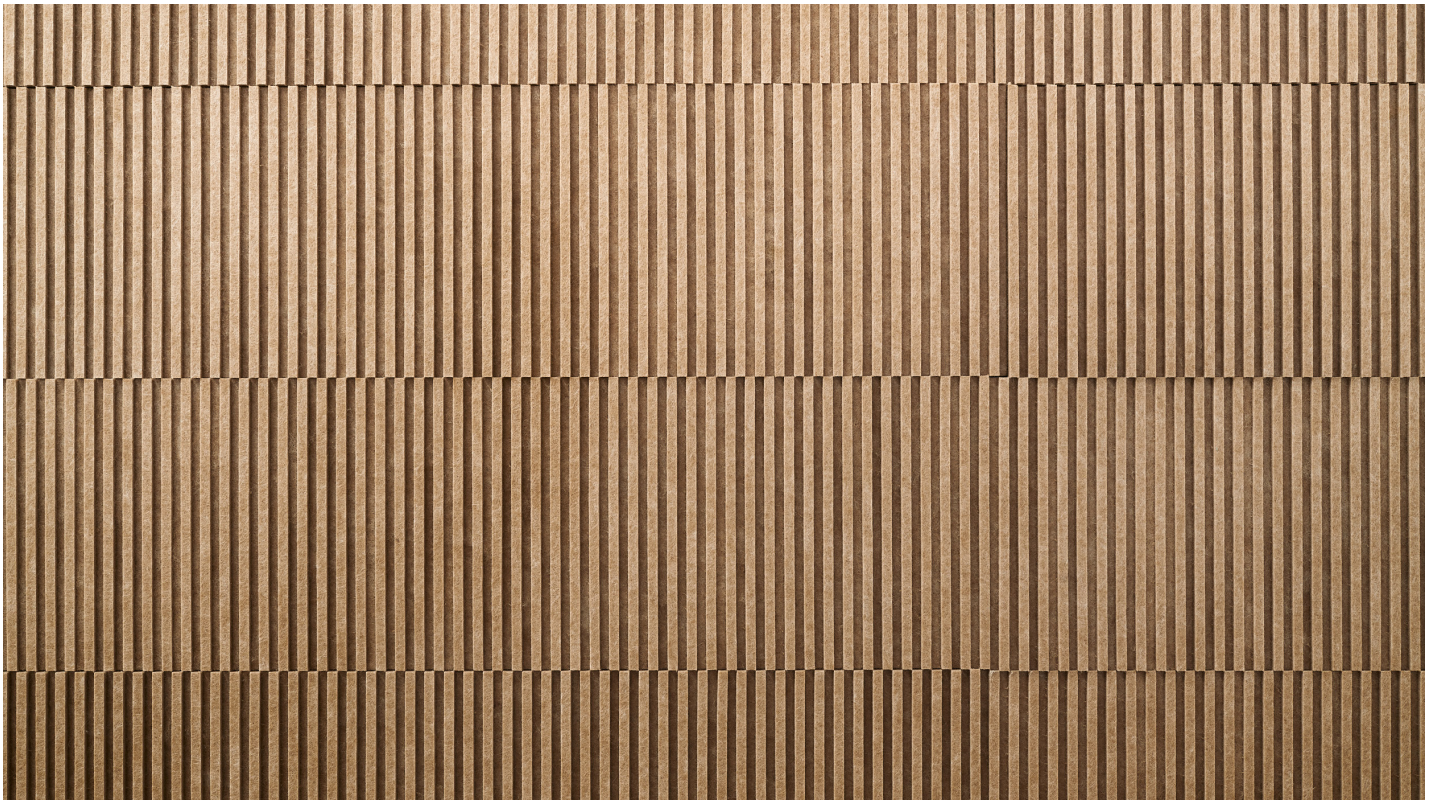
sales@dfbsales.com

dfbsales.com

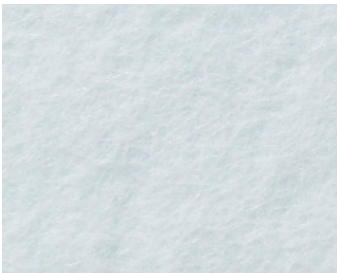
SOUND OUT™ MERIDIAN

Acoustical PET wall covering with a ribbed texture. These easy to install tiles provide wall-to-wall coverage and a seamless installation. Containing 100% recycled material, Sound Out™ Meridian is safe, non toxic, and non-allergenic.

- **Product:** Sound Out™ Meridian
- **Composition:** 100% Polyester Fiber (PET)
- **Panel Thickness:** 1/2, 1 or 2 inch (~12, 24, 48mm)
- **Panel Size:** Recommended panel size 24x6" (610 x 153 mm)
- **Lead Time:** 6-8 weeks
- **Fire Rating:** ASTM E84 Class A
- **Acoustics:** ASTM C 423: 1" 0.8 NRC, 0.83 SAA; 1/2" 0.45 NRC, 0.43 SAA
- **Environmental:** Contains 100% previously recycled polyester fiber
- **Custom:** Custom sizes and shapes available upon request



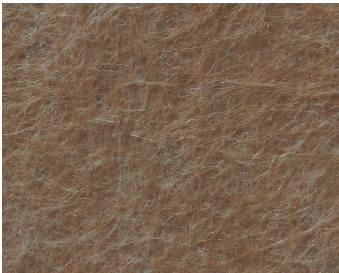
Color Options



KP-04



KP-05



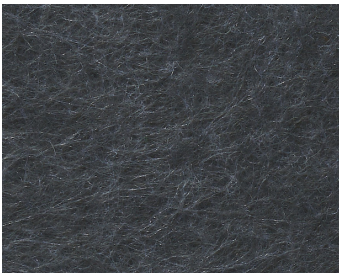
KP-06



KP-10



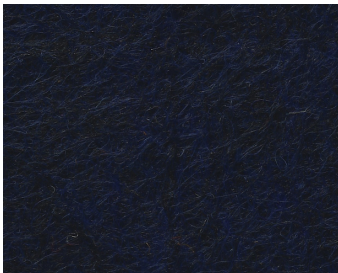
KP-11



KP-12



KP-13



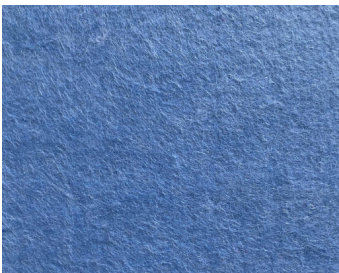
KP-16



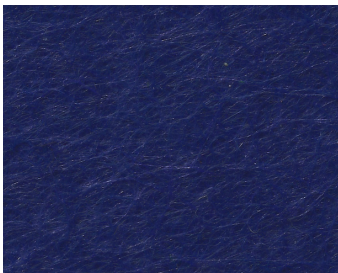
KP-17



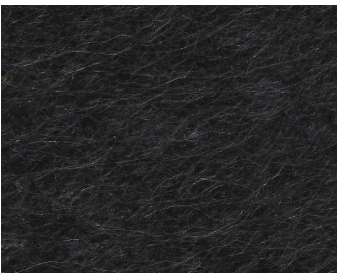
KP-21



KP-22



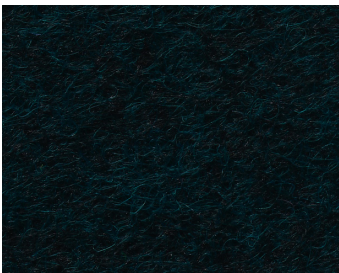
KP-23



KP-28



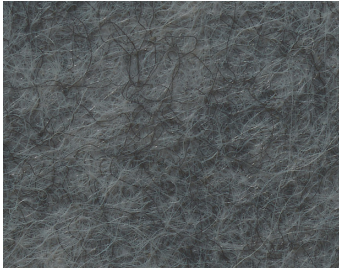
KP-33



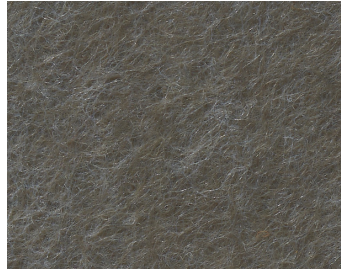
KP-34



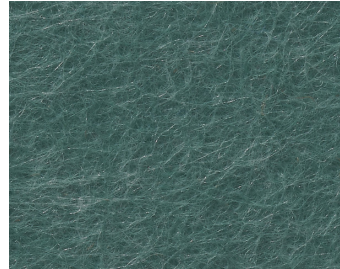
KP-36



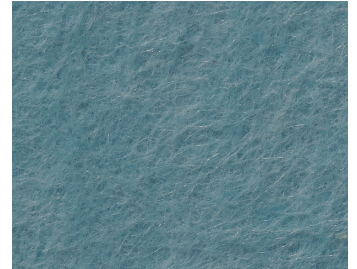
KP-38



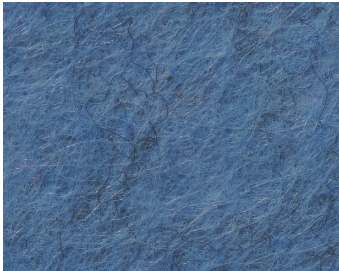
KP-39



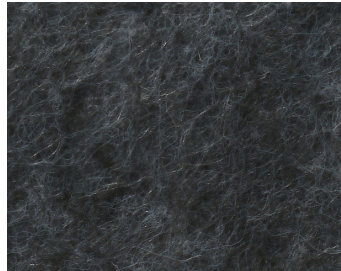
KP-40



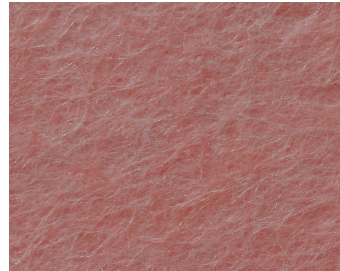
KP-41



KP-42



KP-45



KP-46

DFB

**SOUND OUTTM
LANE**

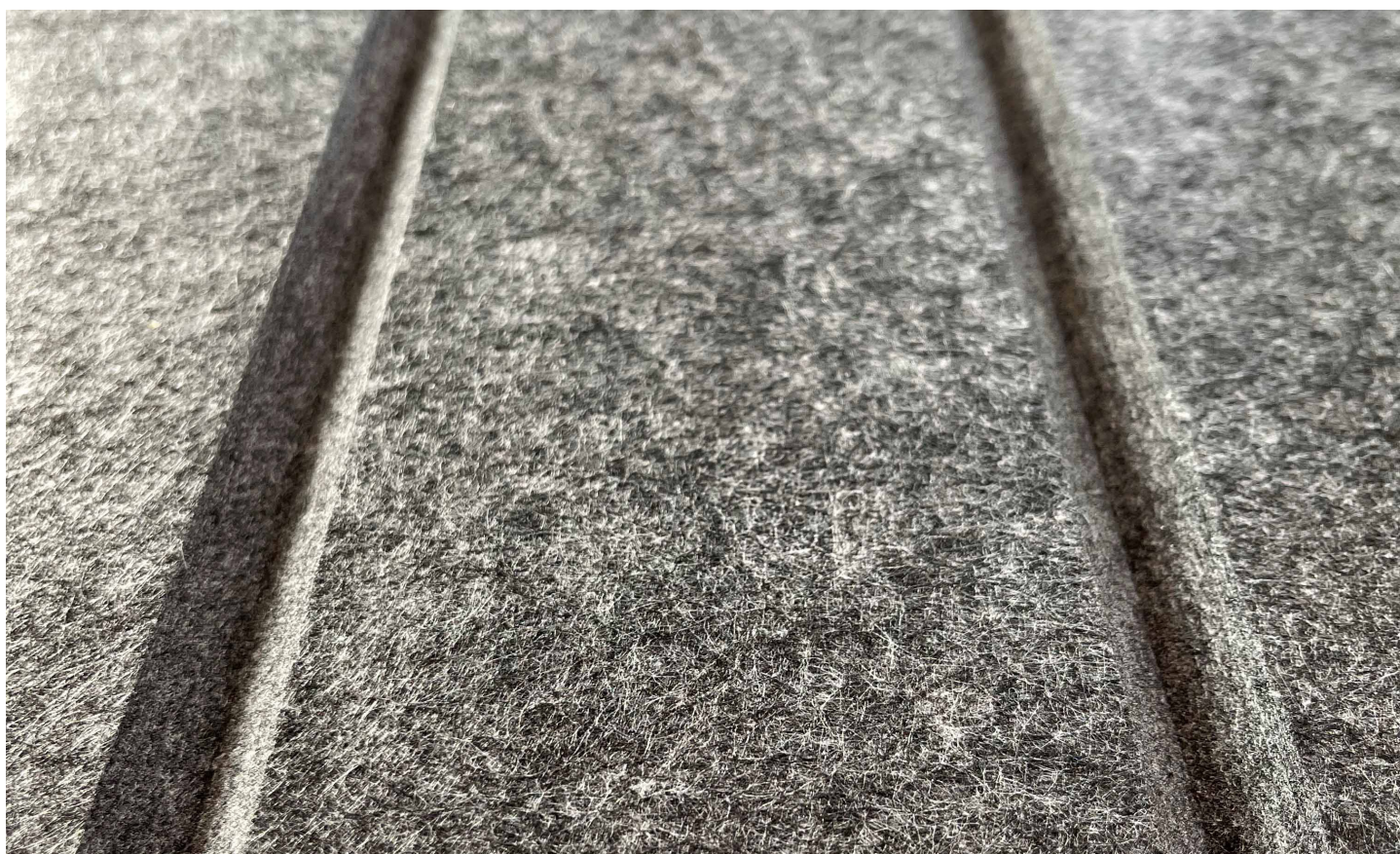
sales@dfbsales.com

dfbsales.com

SOUND OUT™ LANE

Linear grooves are carved into up to 2 layers of PET creating unique patterns. These acoustical panels are available in a single color or two colors, and are offered in various custom patterns.

- **Product:** Sound Out™ Lane
- **Composition:** 100% Polyester Fiber (PET)
- **Panel Thickness:** 1/2, 1 or 2 inch (~12, 24, 48mm)
- **Width:** 39" (recommended maximum width)
- **Height:** 94"
- **Lead Time:** 6-8 weeks
- **Acoustics:** ASTM C 423: 1" 0.8 NRC, 0.83 SAA; 1/2" 0.45 NRC, 0.43 SAA
- **Environmental:** Contains 100% previously recycled polyester fiber
- **Custom:** Custom patterns & sizes available upon request



KP Colors

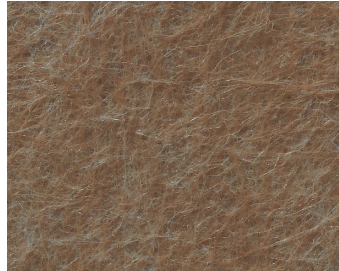
The KP colors listed below are the base panel layer, while the KF colors are the top felt layer. Lane can be designed using a single color (KP colors) or two colors (KP + KF). Select your colors and then select your pattern.



KP-04



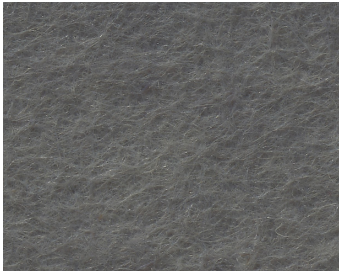
KP-05



KP-06



KP-10



KP-11



KP-12



KP-13



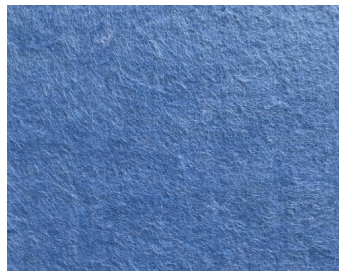
KP-16



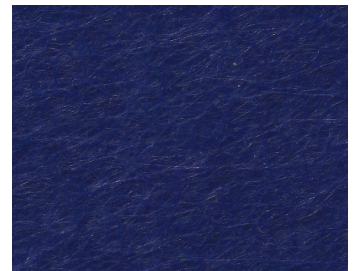
KP-17



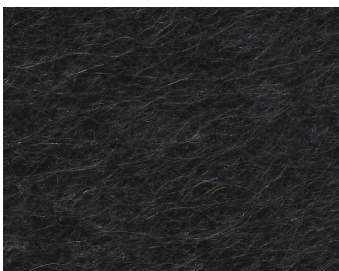
KP-21



KP-22



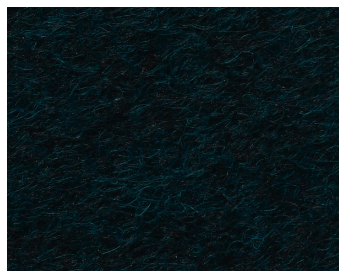
KP-23



KP-28



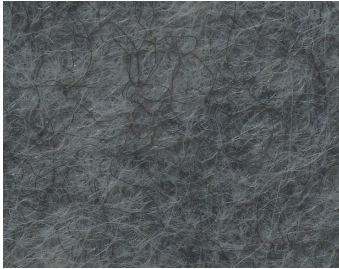
KP-33



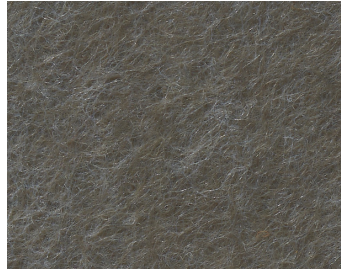
KP-34



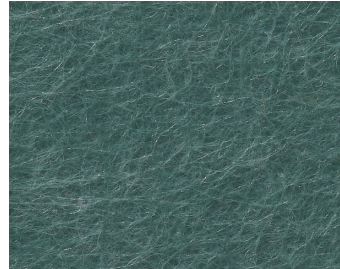
KP-36



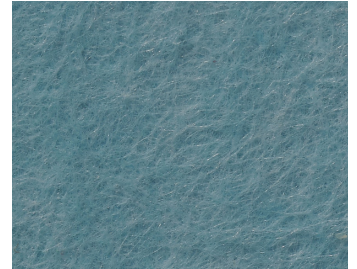
KP-38



KP-39



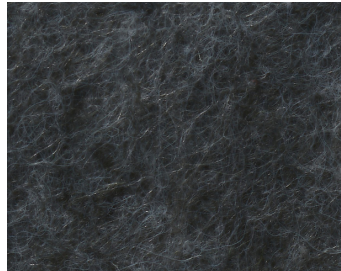
KP-40



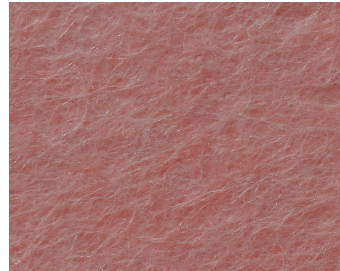
KP-41



KP-42

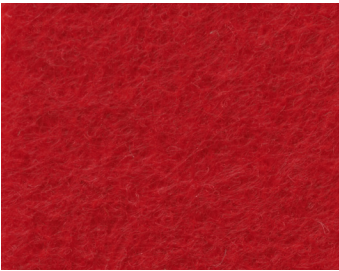


KP-45



KP-46

KF Colors



KF-01



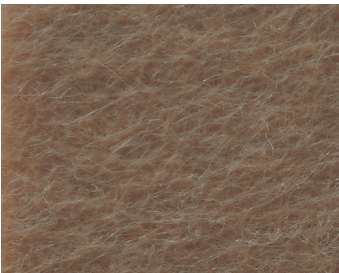
KF-02



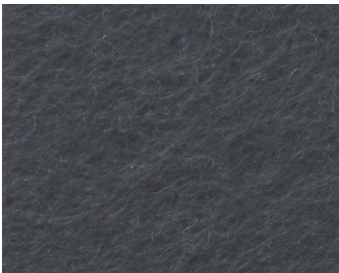
KF-04



KF-10



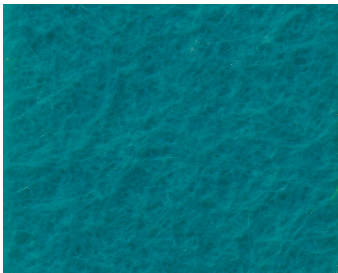
KF-11



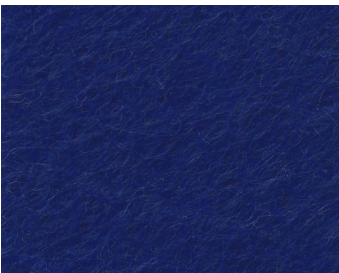
KF-12



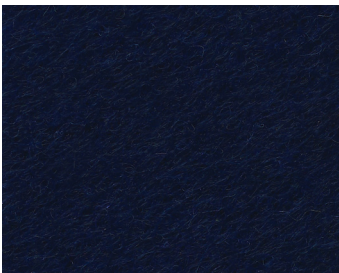
KF-16



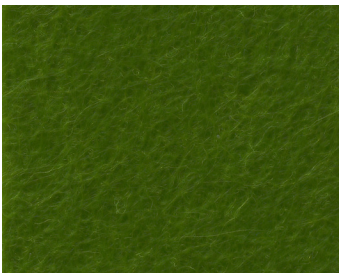
KF-18



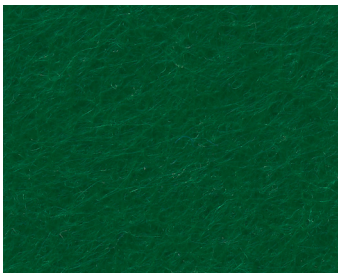
KF-19



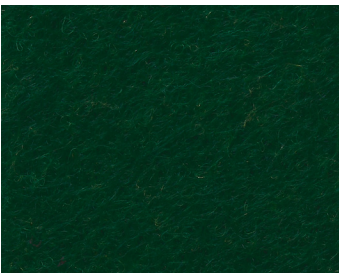
KF-20



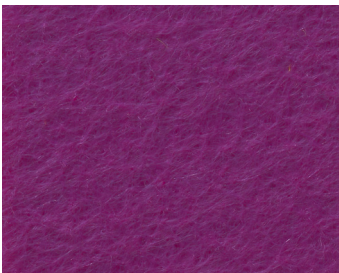
KF-24



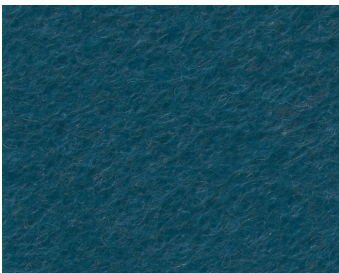
KF-25



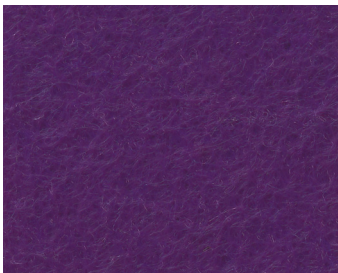
KF-26



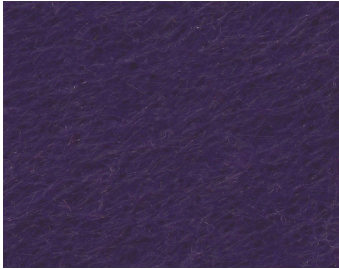
KF-27



KF-28



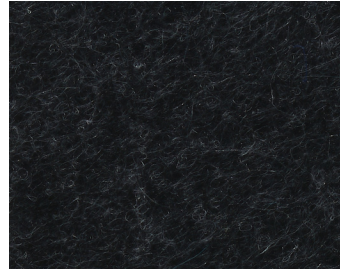
KF-29



KF-30



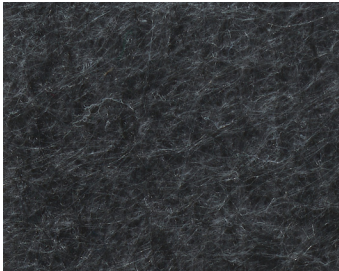
KF-31



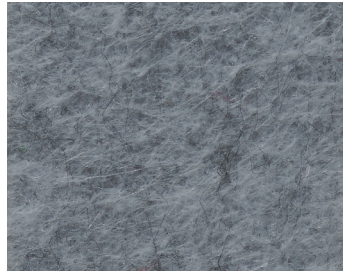
KF-32



KF-33



KF-34



KF-35



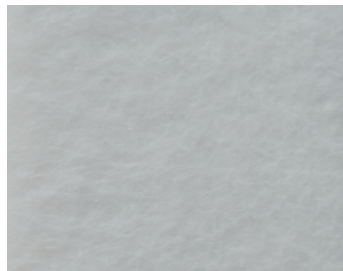
KF-36



KF-37



KF-38



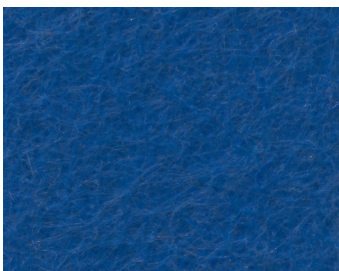
KF-39



KF-40



KF-43



KF-44



KF-47



KF-48

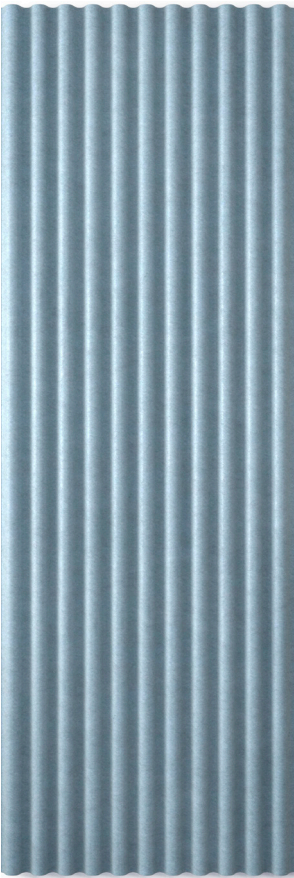
DFB

**SOUND OUT™
TIDE**

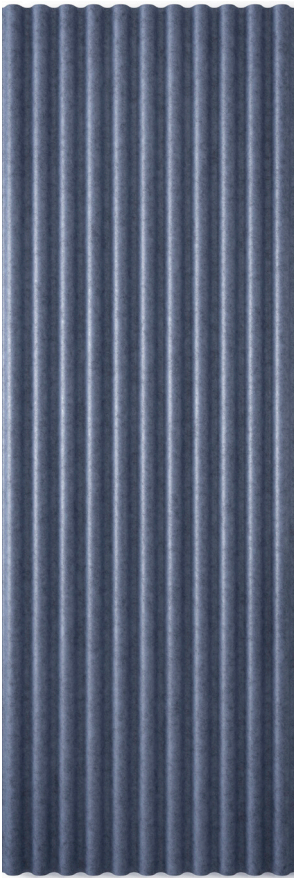
sales@dfbsales.com

dfbsales.com

Color Options

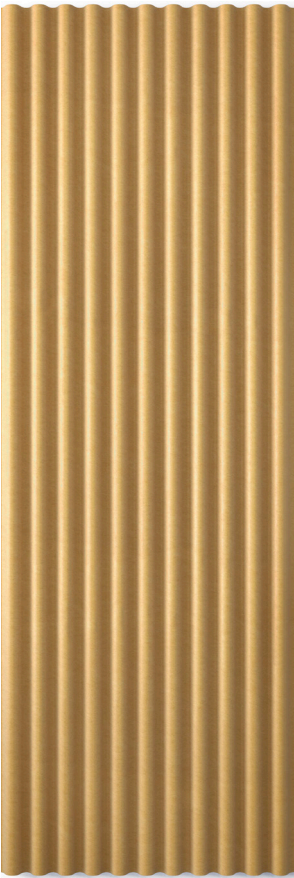


KP-41



KP-42

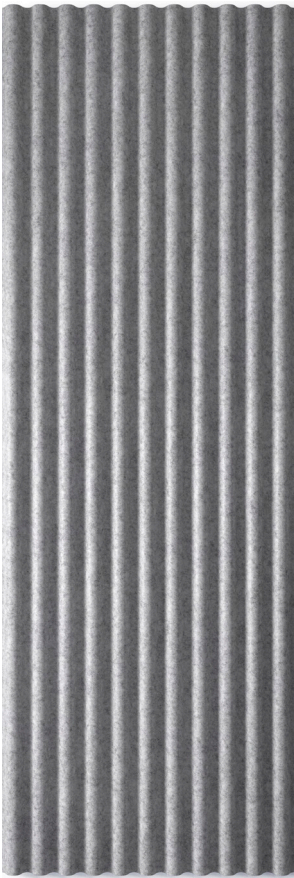
Color Options



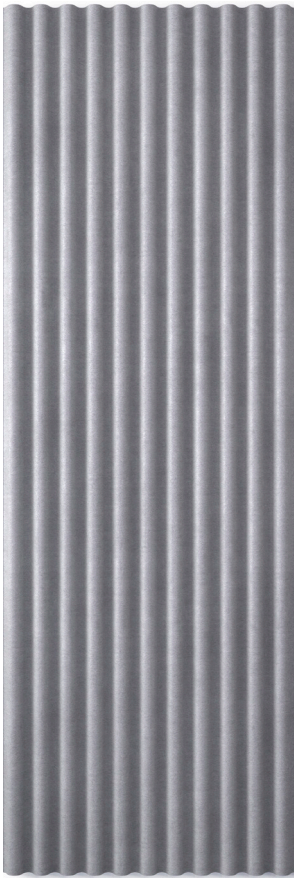
KP-02



KP-05



KP-10



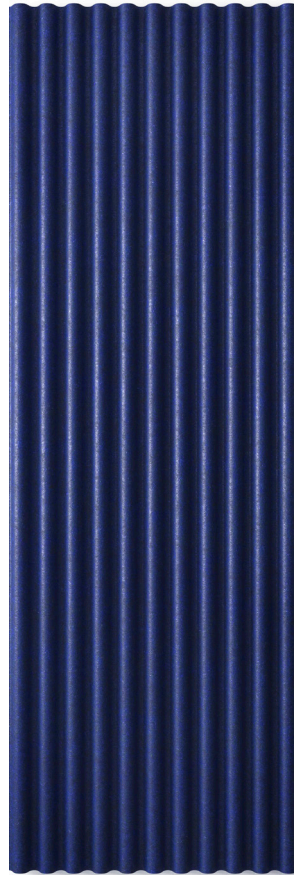
KP-11



KP-13



KP-17



KP-23



KP-28

SOUND OUT™ TIDE

Acoustical PET panels distinguished by their wavy pattern. Tide is available for a variety of applications, all offering acoustical solutions. Tide can be applied to the wall both vertically and horizontally.

- **Product:** Sound Out™ Tide
- **Composition:** 100% Polyester Fiber (PET)
- **Panel Thickness:** ~1.4" (35mm)
- **Width:** 32"
- **Height:** 94"
- **Lead Time:** 6-8 weeks
- **Acoustics:** Testing in progress
- **Environmental:** Contains 100% previously recycled polyester fiber.



SOUND OUT™ TIDE BAFFLES

Horizontal hanging baffles suspended from the ceiling. Tide Baffles can stand alone, be grouped with multiple hanging Baffles, or paired with our Tide wall panels, for ultimate sound absorption.

- **Product:** Sound Out™ Tide Baffle
- **Composition:** 100% Polyester Fiber (PET)
- **Panel Thickness:** ~1.4" (35mm)
- **Width:** 32"
- **Length:** 64"
- **Cable Height:** Custom
- **Hardware:** Powder-coated Aluminum
- **Lead Time:** 6-8 weeks
- **Acoustics:** Testing in progress
- **Environmental:** Contains 100% previously recycled polyester fiber.



DFB

SOUND OUT[®] RUSTICA



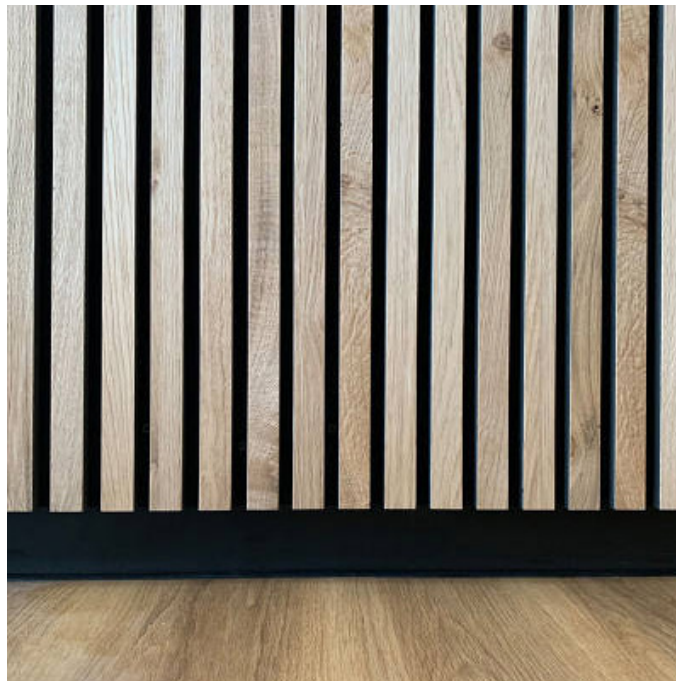
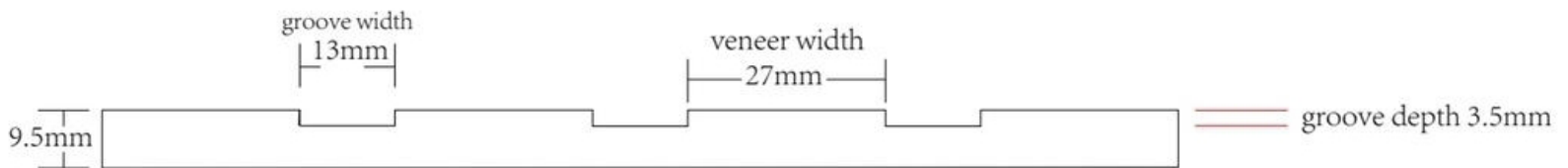
sales@dfbsales.com

dfbsales.com

SOUND OUT™ RUSTICA

Rustica offers the benefits of PET and the rustic yet stylized aesthetic of our 8 wood veneer finishes. Select from our PET panel options below and pair it with your preferred veneer finish. Rustica can be installed horizontally or vertically on the wall.

- **Product:** Sound Out™ Rustica
- **Composition:** 100% Polyester Fiber (PET) + wood veneer
- **Panel Thickness:** ~9.5mm
- **Veneer Thickness:** ~0.5mm
- **Width:** 24"
- **Height:** 94" (available in 48" heights)
- **Lead Time:** 6-8 weeks
- **Acoustics:** Testing in progress
- **Environmental:** Contains 100% previously recycled polyester fiber



PET Panel Options



DS-31



DS-01



DS-09



DS-18

Always request physical samples prior to ordering to ensure color accuracy.

Wood Veneer Finishes

White Oak 423S



Silver Oak 49Q



White Oak 29C



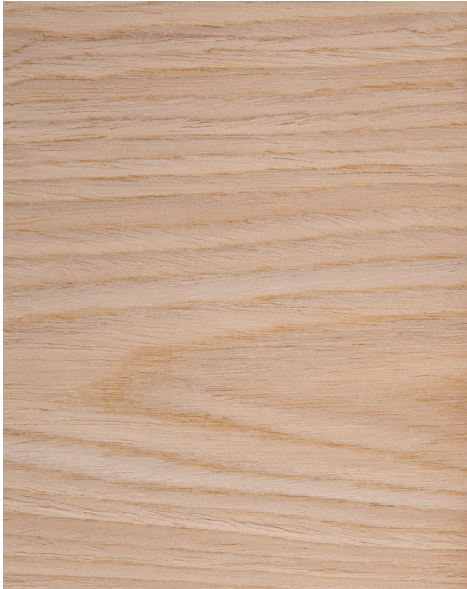
White Oak 558S



Red Oak 57C



Oak 500C



Teak 1286C



Silver Oak 386Q



Always request physical samples prior to ordering to ensure color accuracy.