

# DFB

## SOUND OUT™



MADE IN  
**NYC**™

DFB Sales  
21-07 Borden Avenue  
Long Island City, NY 11101  
[sales@dfbsales.com](mailto:sales@dfbsales.com)  
[dfbsales.com](http://dfbsales.com)

## PET BY DFB

Sound Out™ Panels are DFB's traditional PET panels. They can be tailored to fit any wall using our standard 4x9' boards, or ordered in custom shapes and sizes. Sound Out™ Panels are lightweight making them easy to handle and install.

DFB's entire Sound Out™ line is eco-friendly and VOC Free, and contains previously recycled polyester fiber, shaped and formed by heat.

## Specifications

- **Product:** Sound Out™ Panels
- **Composition:** 100% Polyester Fiber (PET)
- **Panel Thickness:** 1/2 or 1 (~12, 24mm)
- **Maximum Width:** 4 ft (1220 mm)
- **Maximum Length:** 9 ft (2800 mm) custom sizes available up to 10 feet
- **Lead Time:** 4-8 weeks (project specific)
- **Fire Rating:** ASTM E84 Class A
- **Acoustics:** ASTM C 423: 1" 0.75 NRC, 0.74 SAA; 1/2" 0.30 NRC, 0.33 SAA
- **Environmental:** Contains previously recycled polyester fiber
- **Custom:** Custom sizes and shapes available upon request



## SO Colors

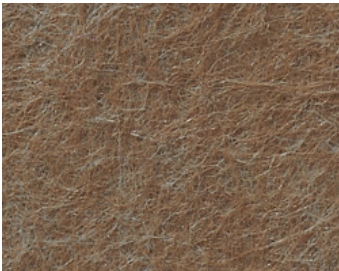
The SO colors listed below are the base panel layer. Lane can be designed using a single color (SO colors) or two colors (SO + SF), which is a more customized option.



SO-04



SO-05



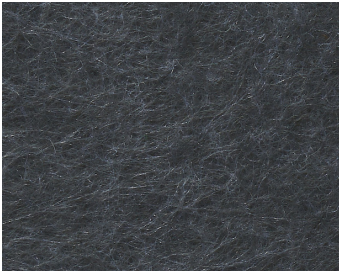
SO-06



SO-10



SO-11



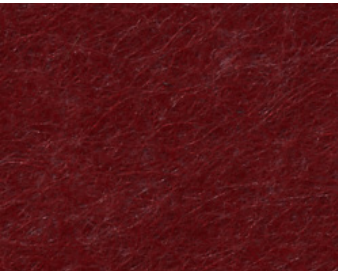
SO-12



SO-13



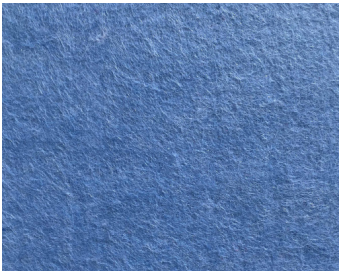
SO-17



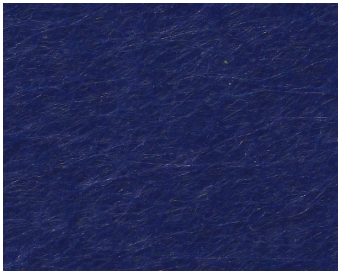
SO-18



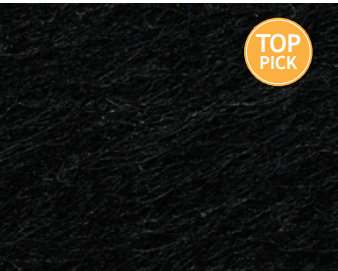
SO-21



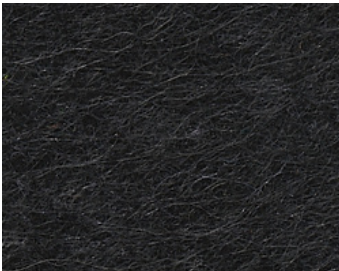
SO-22



SO-23



SO-27



SO-28



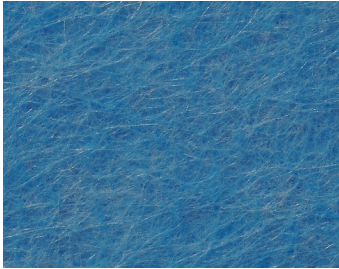
SO-33



SO-36

Always request physical samples prior to ordering to ensure color accuracy.

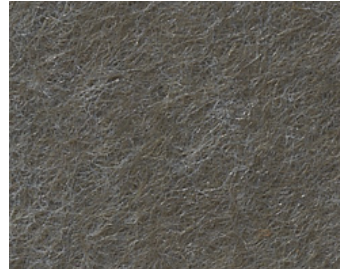




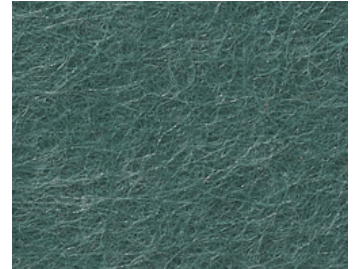
SO-37



SO-38



SO-39



SO-40



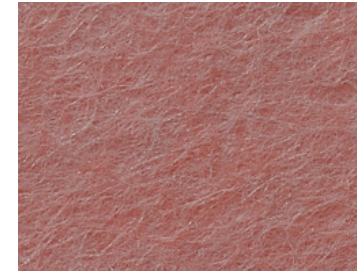
SO-41



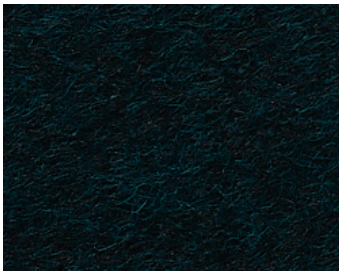
SO-42



SO-45



SO-46



SO-61

Always request physical samples prior to ordering to ensure color accuracy.