

SOUND OUTTM LANE

sales@dfbsales.com

dfbsales.com

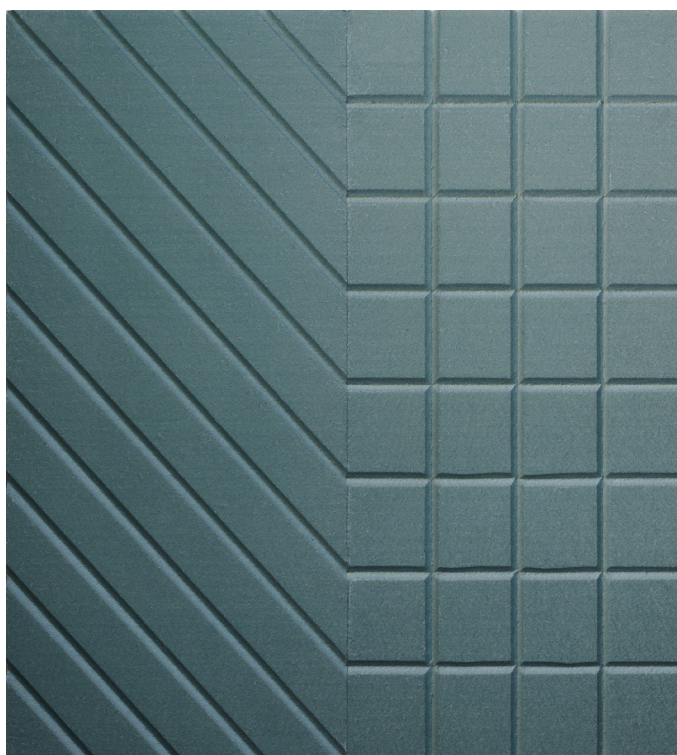
SOUND OUT™ LANE

Linear grooves are carved into DFB's Sound Out™ PET panels creating unique patterns. These acoustical panels are offered in standard patterns, and are made into full-scale panels.

Certain linear patterns are also available in square and rectangular tiles, that can be installed as a single pattern. Sound Out™ Connecting Tiles are two patterns paired together as seen below.

- **Product:** Sound Out™ Lane (Single Color)
- **Composition:** 100% Polyester Fiber (PET)
- **Panel Thickness:** 0.47" or 0.94" (12, 24mm)
- **Panel Width:** 47" (1220 mm)
- **Height:** 109" (2800 mm)
- **Tiles:** 12x12", 24x24" (square), 12x24" (rectangle), ~9x21" (connecting tiles)
- **Lead Time:** 6-8 weeks (project specific)
- **Acoustics:** ASTM C 423: 1" 0.75 NRC, 0.74 SAA; 1/2" 0.30 NRC, 0.33 SAA
- **Environmental:** Contains previously recycled polyester fiber
- **Custom:** Custom patterns available upon request

Specifications for Sound Out™ Lane Two-Tone on page 8.



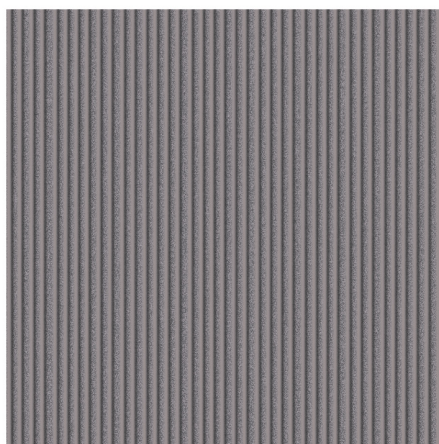
Sound Out™ Connecting Tiles
Size: ~9"x21"

Patterns to Inspire

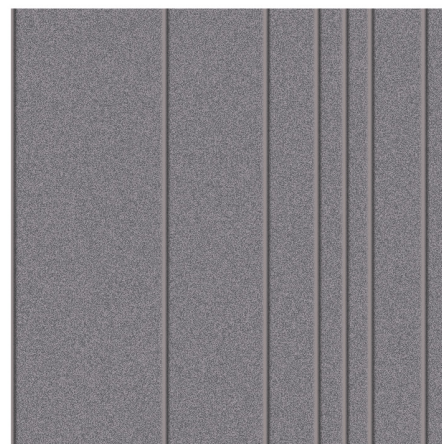
The below patterns are for design inspiration and will be scaled to fit a full size panel.



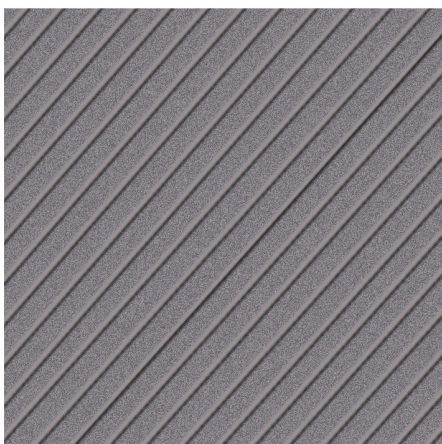
Pattern A



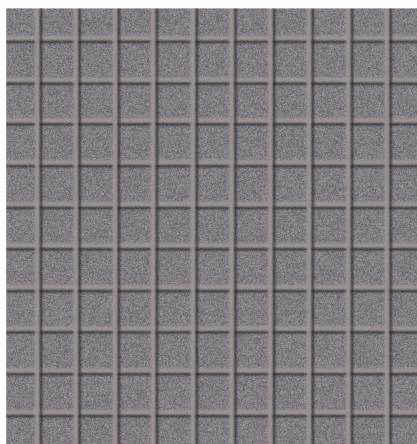
Pattern B



Pattern C



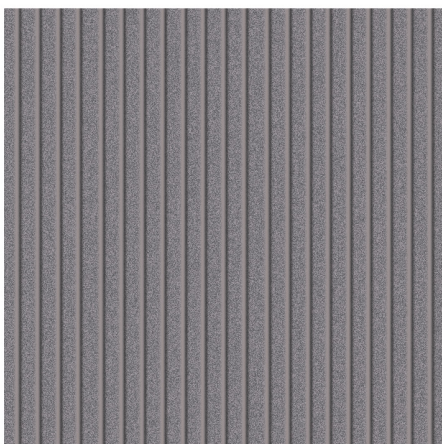
Pattern D



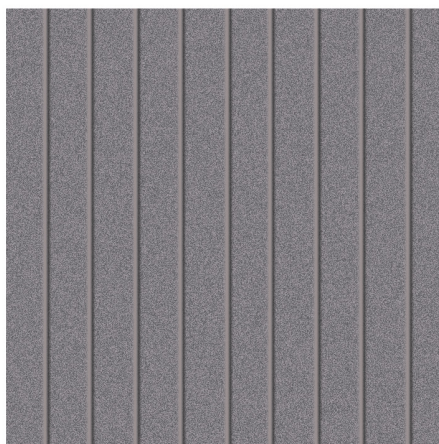
Pattern E



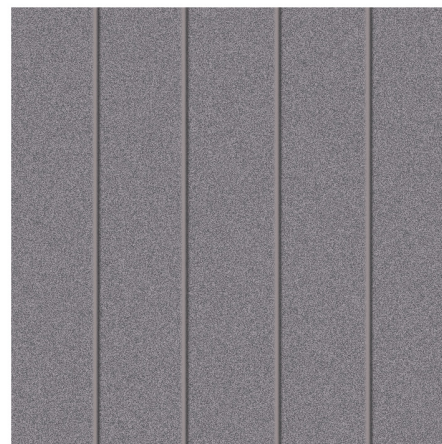
Pattern F



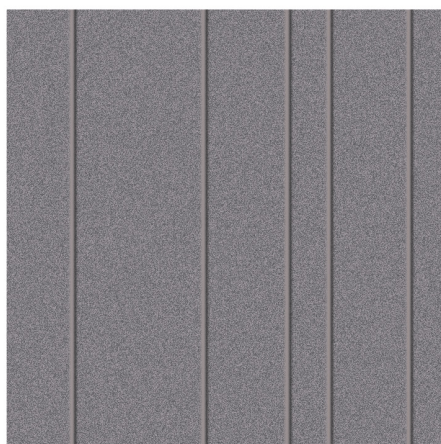
Pattern G



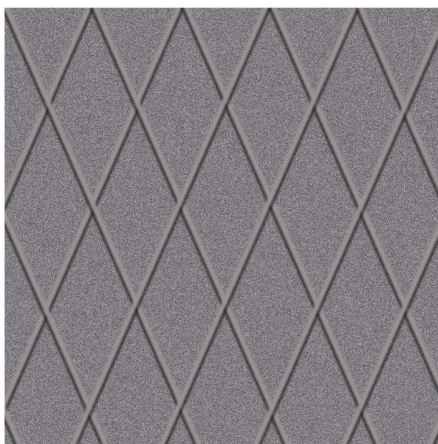
Pattern H



Pattern I



Pattern J



Pattern K

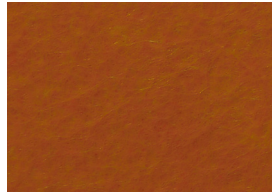
SO Colors



SO-01



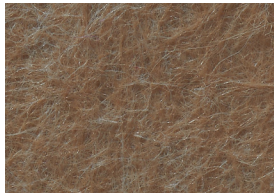
SO-02



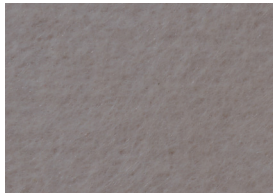
SO-03



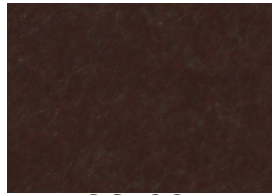
SO-04



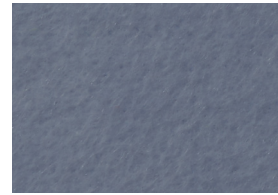
SO-06



SO-07



SO-08



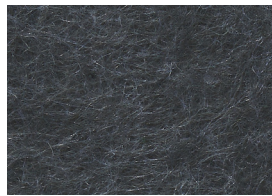
SO-09



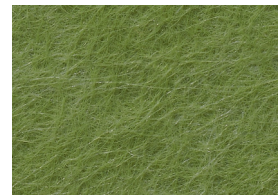
SO-10



SO-11



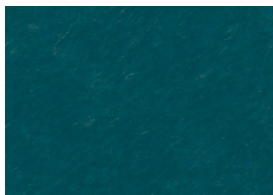
SO-12



SO-13



SO-14



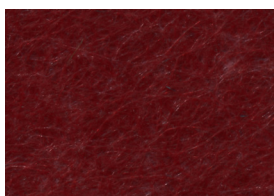
SO-15



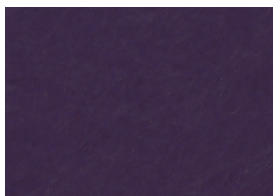
SO-16



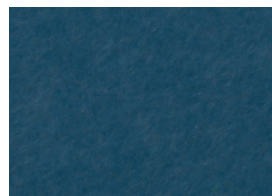
SO-17



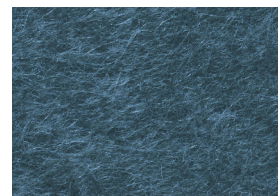
SO-18



SO-19



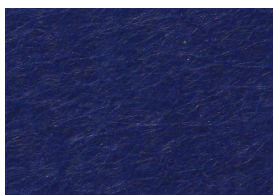
SO-20



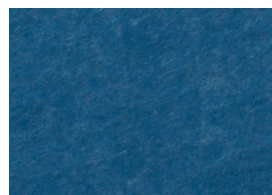
SO-21



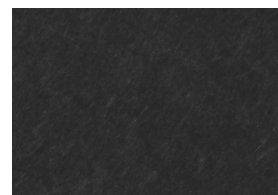
SO-22



SO-23



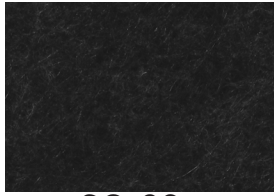
SO-24



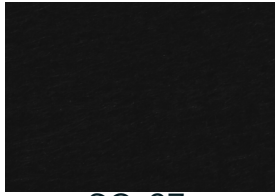
SO-25

Always request physical samples prior to ordering to ensure color accuracy.

SO Colors



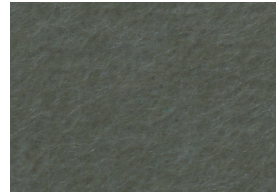
SO-26



SO-27



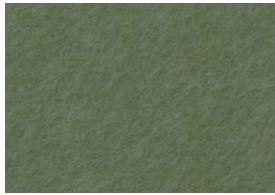
SO-28



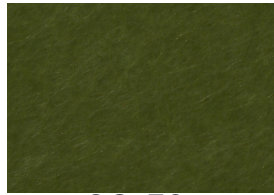
SO-29



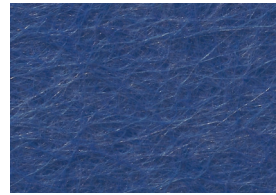
SO-30



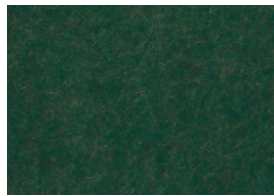
SO-31



SO-32



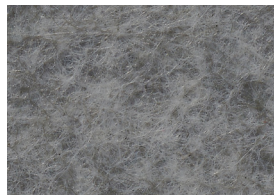
SO-33



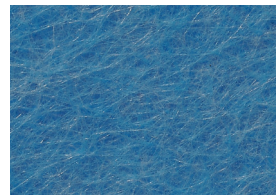
SO-34



SO-35



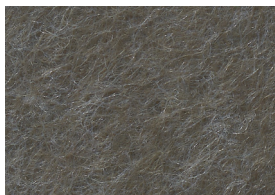
SO-36



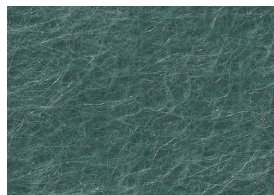
SO-37



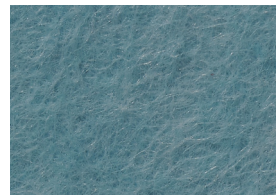
SO-38



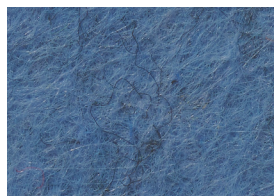
SO-39



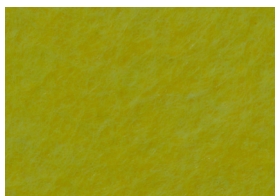
SO-40



SO-41



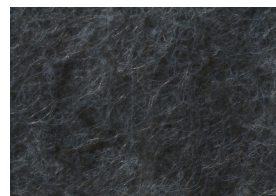
SO-42



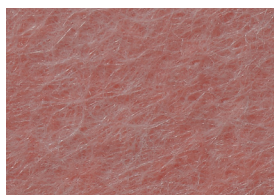
SO-43



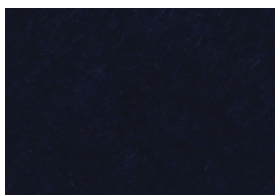
SO-44



SO-45



SO-46



SO-47



SO-48



SO-49

Always request physical samples prior to ordering to ensure color accuracy.

SO Colors



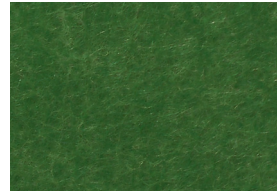
SO-50



SO-51



SO-51



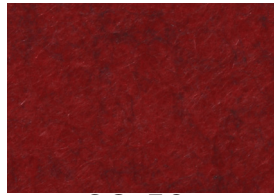
SO-51



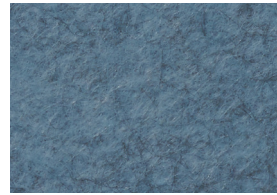
SO-54



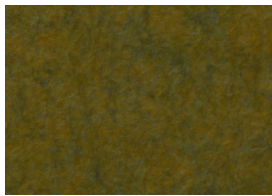
SO-55



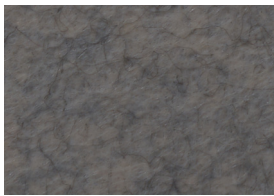
SO-56



SO-57



SO-58



SO-59



SO-60

Always request physical samples prior to ordering to ensure color accuracy.

SF Colors

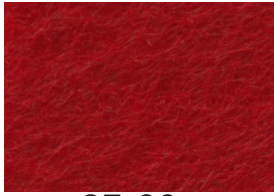
SF colors only apply for two-tone panels

Maximum two-tone panel size: 39" x 109"

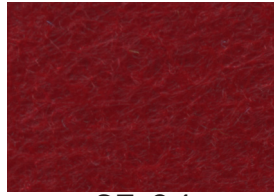
Panel Thickness: 0.47" panel + 0.12" felt (12mm + 3mm)



SF-01



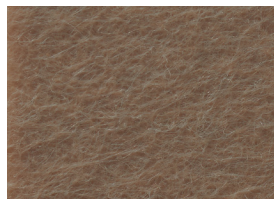
SF-02



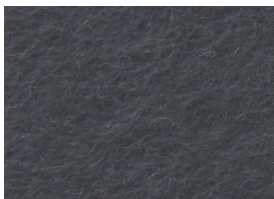
SF-04



SF-10



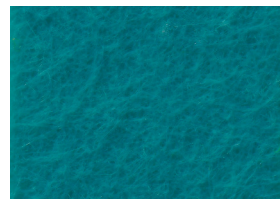
SF-11



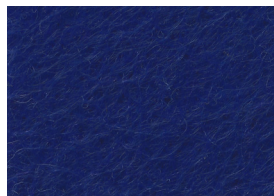
SF-12



SF-16



SF-18



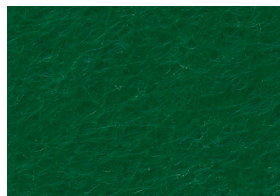
SF-19



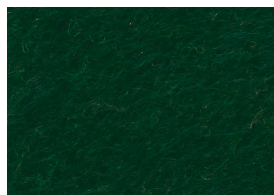
SF-20



SF-24



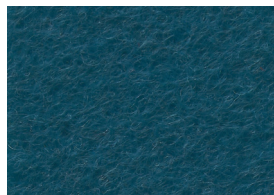
SF-25



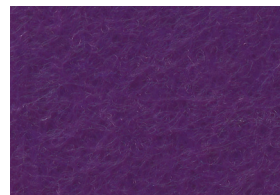
SF-26



SF-27



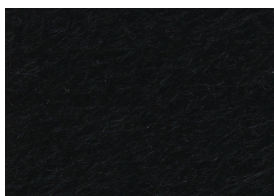
SF-28



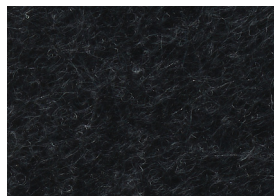
SF-29



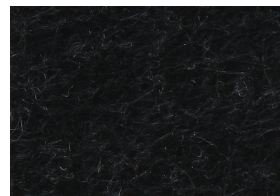
SF-30



SF-31



SF-32



SF-33

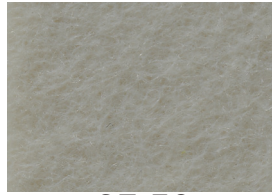
Always request physical samples prior to ordering to ensure color accuracy.



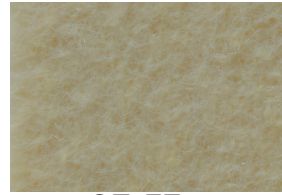
SF-34



SF-35



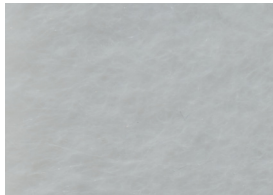
SF-36



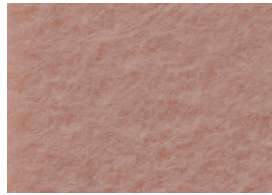
SF-37



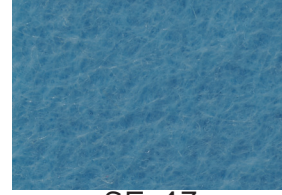
SF-38



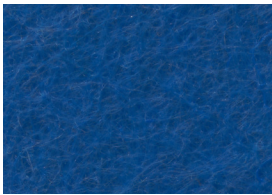
SF-39



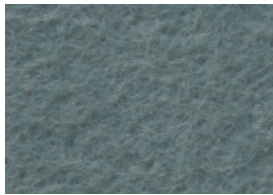
SF-40



SF-43



SF-44



SF-47



SF-48