

A modern interior scene featuring a green armchair, a grey sofa, and a wall with vertical wooden slats. The room has a minimalist design with a grey carpet and a small round wooden table. The wall is covered in vertical wooden slats, and the ceiling has recessed lighting.

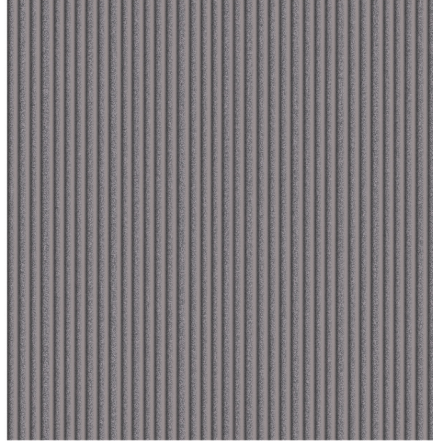
# SOUND OUT<sup>®</sup> LANE



A collection of acoustical panels, offered in 9 V-groove linear patterns and over 90 colors.



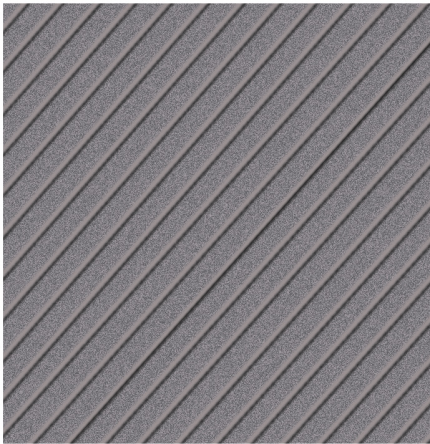
Pattern A  
3", 7.5", 1.25", 1.25", 3"



Pattern B  
0.5"



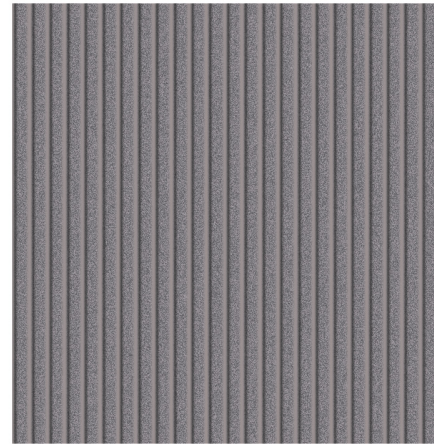
Pattern C  
9", 6", 3", 1.25", 1.25", 3"



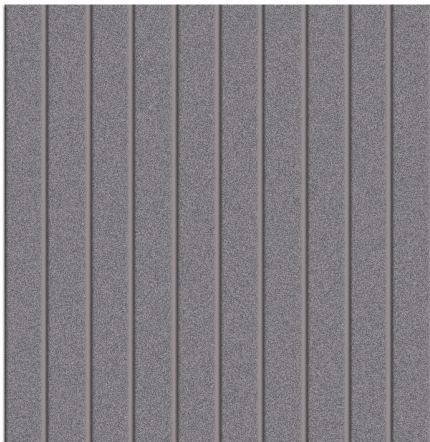
Pattern D  
2.3932"



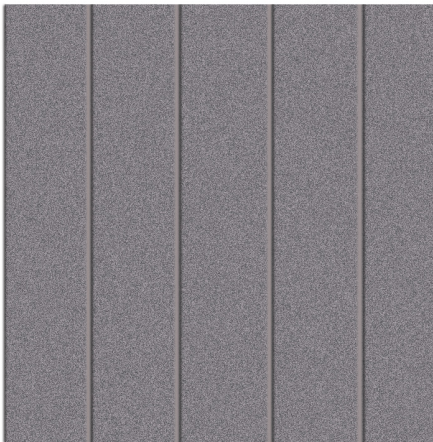
Pattern E  
8" Squares



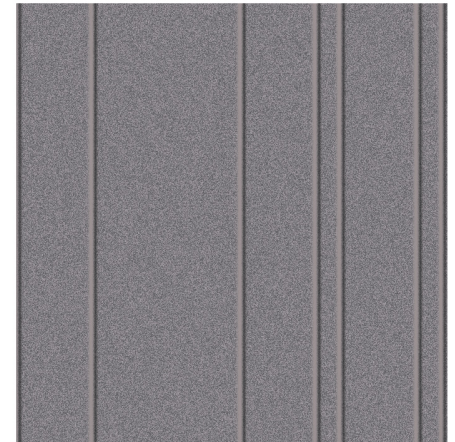
Pattern F  
1"



Pattern G  
2.9375"



Pattern H  
4.7"



Pattern I  
4", 8", 4", 1.75", 4", 1.75"

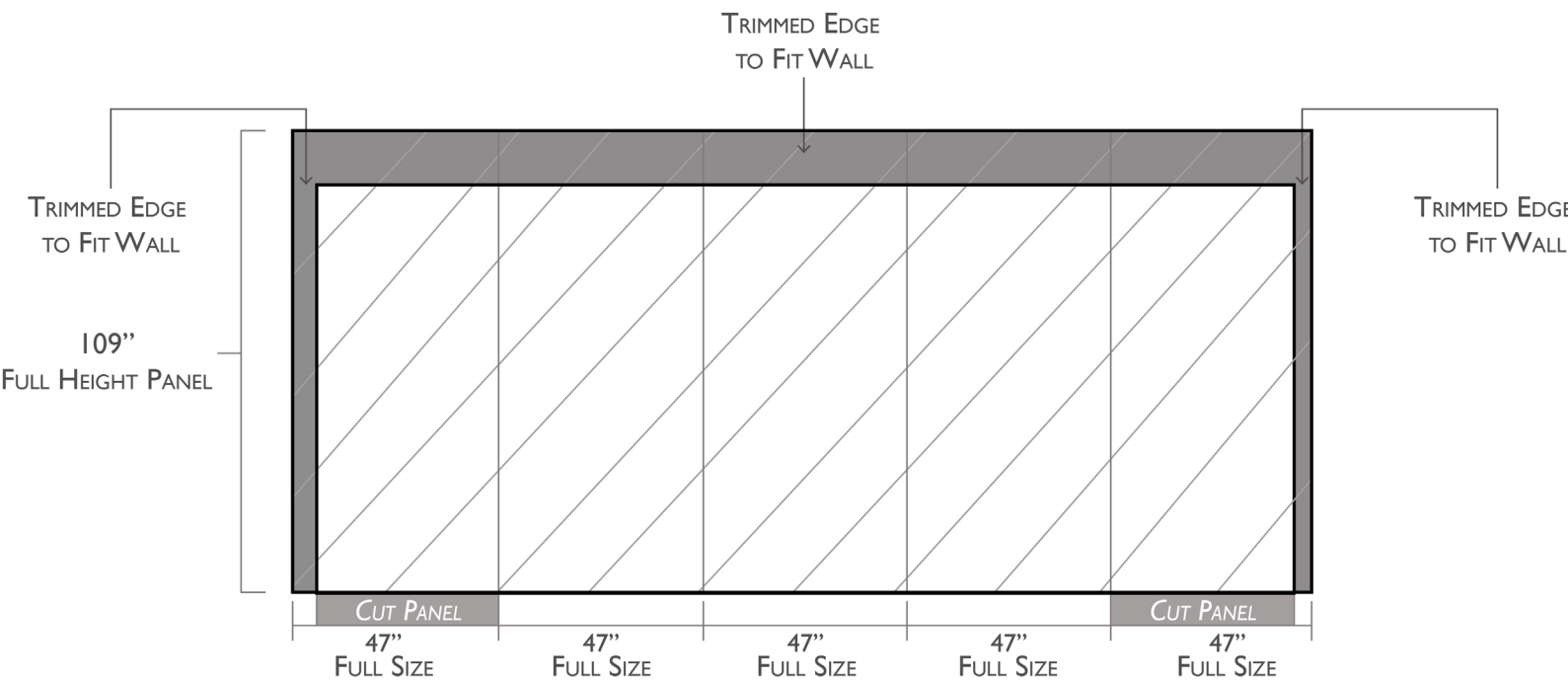
Patterns shown are not to scale. All patterns have beveled edges on both sides except Pattern D.



# Specifications

- **Product:** Sound Out™ Lane (Single Color)
  - **Panel Thickness:** 0.47" & 0.94" (12, 24mm)
  - **Panel Width:** 47" (1220 mm)
  - **Panel Height:** 109" (2800 mm)
  - **V Groove Depth:** 6.5mm (Pattern B, Pattern F 5mm depth)
  - **Acoustics:** ASTM C 423: 1" 0.75 NRC, 0.74 SAA; 1/2" 0.30 NRC, 0.33 SAA
  - **Environmental:** 75% recycled PET material
  - **Custom** Custom patterns available upon request
- 
- **Product:** Sound Out™ Lane (Two-Tone)
  - **Panel Thickness:** 0.47" panel + 0.12" felt (12mm + 3mm)
  - **Panel Width:** 39" (1000mm)
  - **Panel Height:** 109" (2800 mm)
  - **V Groove Depth:** 6.5mm (Pattern B, Pattern F 5mm depth)
  - **Acoustics:** ASTM C 423: 1" 0.75 NRC, 0.74 SAA; 1/2" 0.30 NRC, 0.33 SAA
  - **Environmental:** 75% recycled PET material

# Installation Drawing





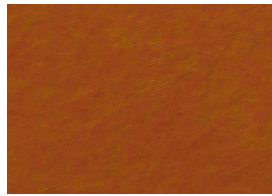
## SO Colors



SO-01



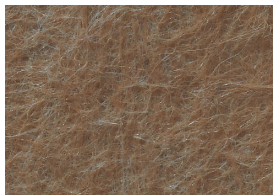
SO-02



SO-03



SO-04



SO-06



SO-07



SO-08



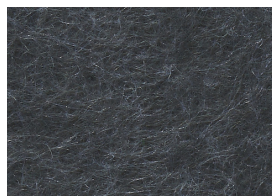
SO-09



SO-10



SO-11



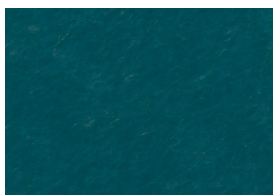
SO-12



SO-13



SO-14



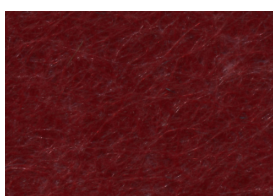
SO-15



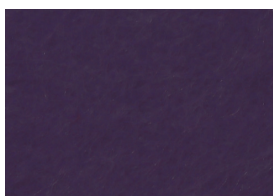
SO-16



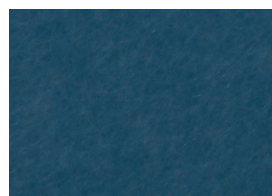
SO-17



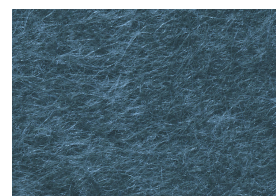
SO-18



SO-19



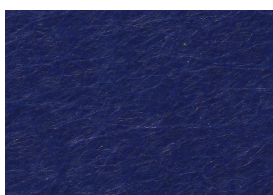
SO-20



SO-21



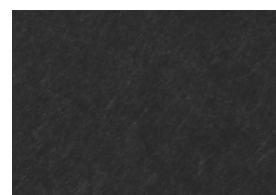
SO-22



SO-23



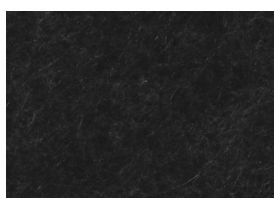
SO-24



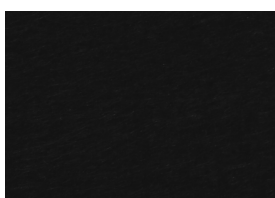
SO-25

Always request physical samples prior to ordering to ensure color accuracy.

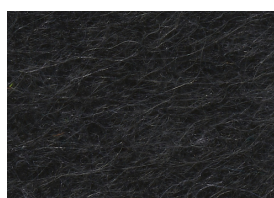




SO-26



SO-27



SO-28



SO-29



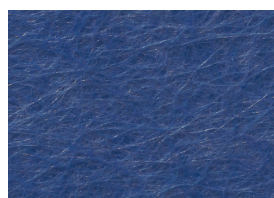
SO-30



SO-31



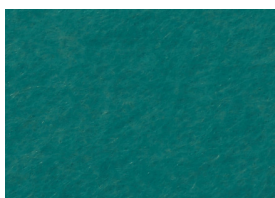
SO-32



SO-33



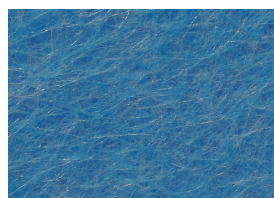
SO-34



SO-35



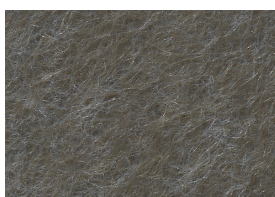
SO-36



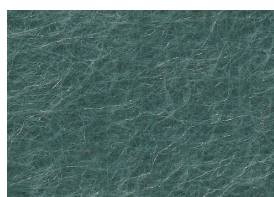
SO-37



SO-38



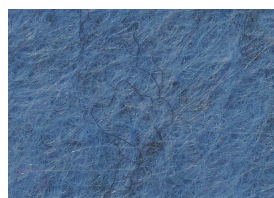
SO-39



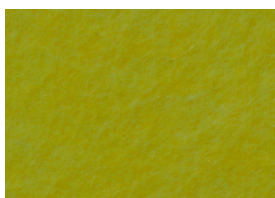
SO-40



SO-41



SO-42



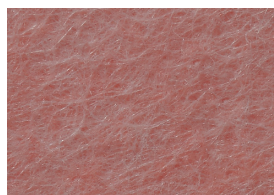
SO-43



SO-44



SO-45



SO-46



SO-47



SO-48



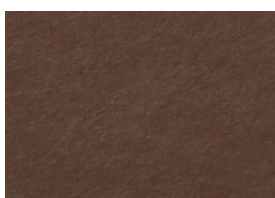
SO-49

Always request physical samples prior to ordering to ensure color accuracy.

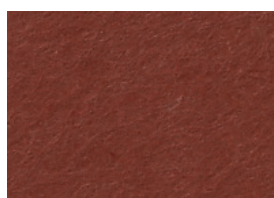




SO-50



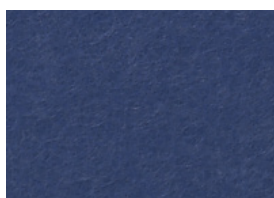
SO-51



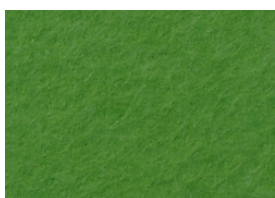
SO-52



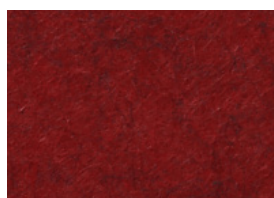
SO-53



SO-54



SO-55



SO-56



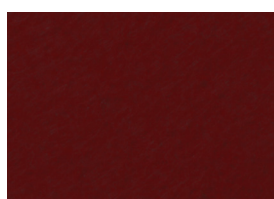
SO-57



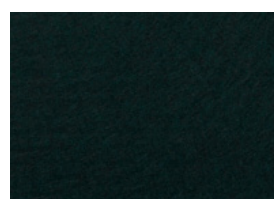
SO-58



SO-59

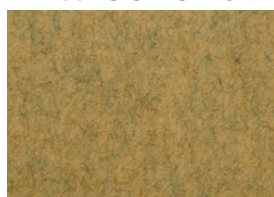


SO-60



SO-61

**NEW COLORS**



SO-62



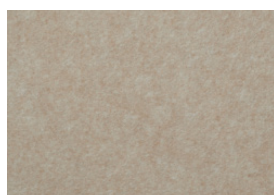
SO-63



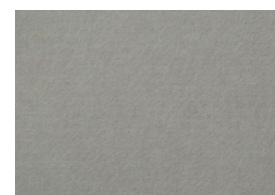
SO-64



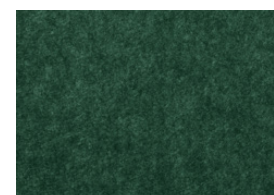
SO-65



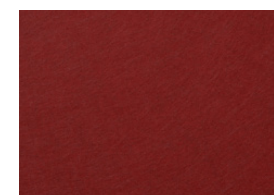
SO-66



SO-67



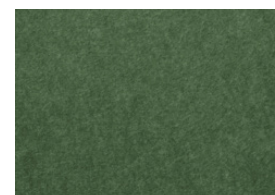
SO-68



SO-69



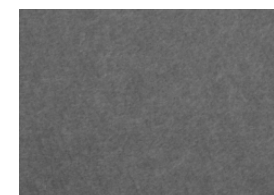
SO-70



SO-71



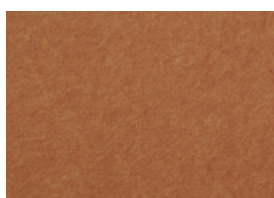
SO-72



SO-73

Always request physical samples prior to ordering to ensure color accuracy.

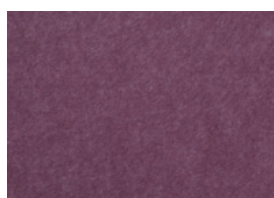




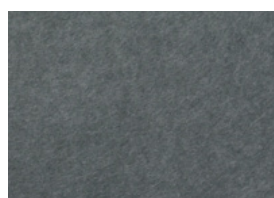
SO-75



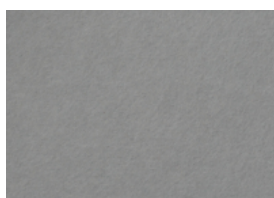
SO-76



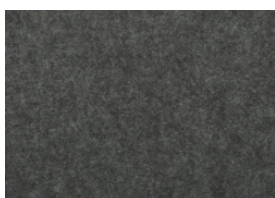
SO-77



SO-78



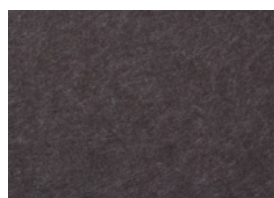
SO-79



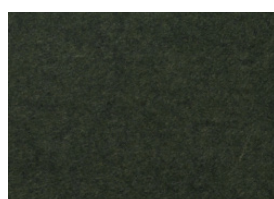
SO-80



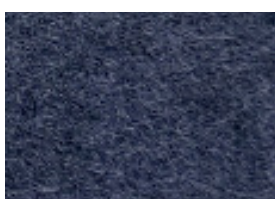
SO-81



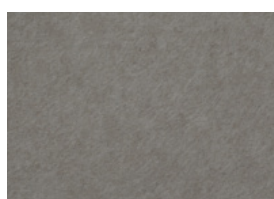
SO-82



SO-83



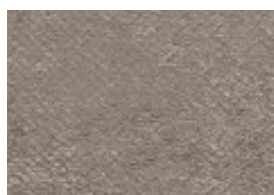
SO-84



SO-85



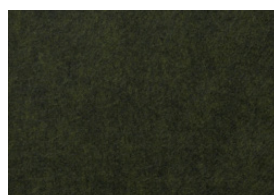
SO-86



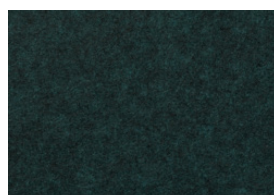
SO-87



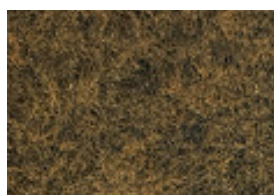
SO-88



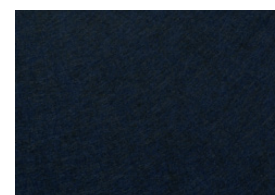
SO-89



SO-90



SO-91



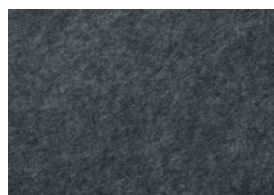
SO-92



SO-93



SO-94



SO-95

Always request physical samples prior to ordering to ensure color accuracy.

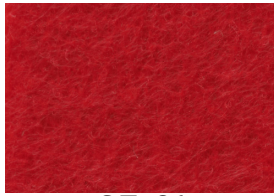


## SF Colors

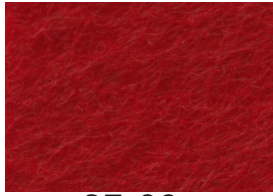
**SF colors only apply for two-tone panels**

Maximum two-tone panel size: 39" x 109"

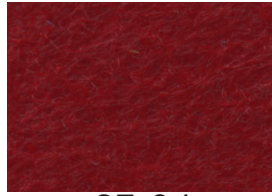
Panel Thickness: 0.47" panel + 0.12" felt (12mm + 3mm) or 0.94 panel + 0.12" felt (24mm + 3mm)



SF-01



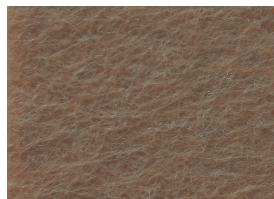
SF-02



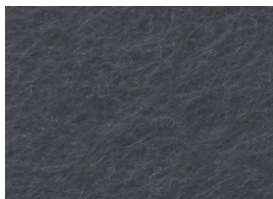
SF-04



SF-10



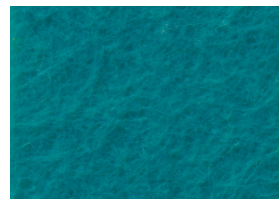
SF-11



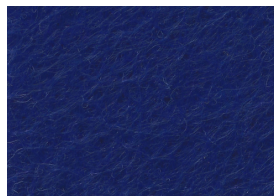
SF-12



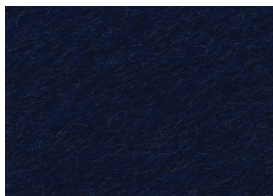
SF-16



SF-18



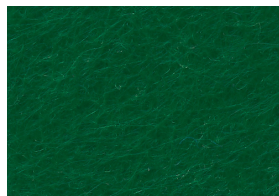
SF-19



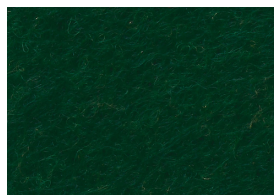
SF-20



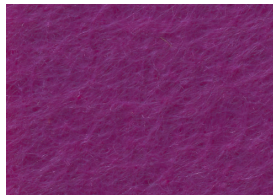
SF-24



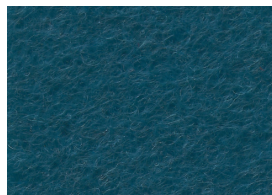
SF-25



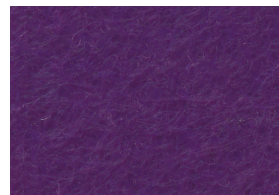
SF-26



SF-27



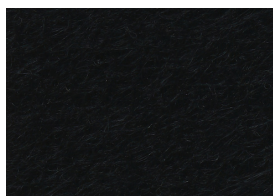
SF-28



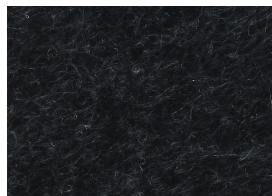
SF-29



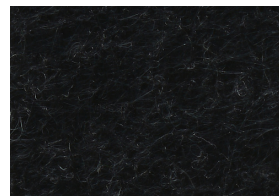
SF-30



SF-31



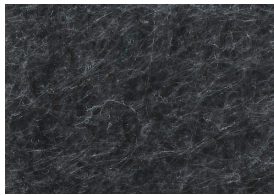
SF-32



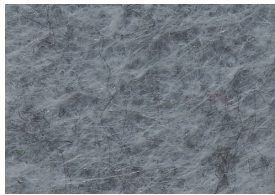
SF-33

Always request physical samples prior to ordering to ensure color accuracy.

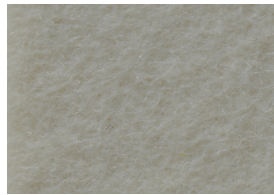




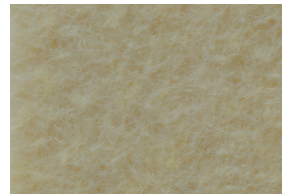
SF-34



SF-35



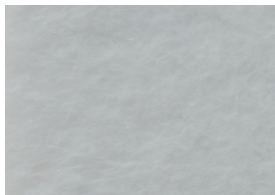
SF-36



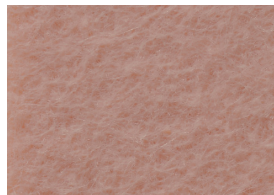
SF-37



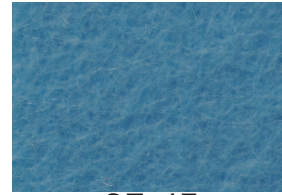
SF-38



SF-39



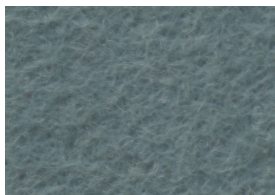
SF-40



SF-43



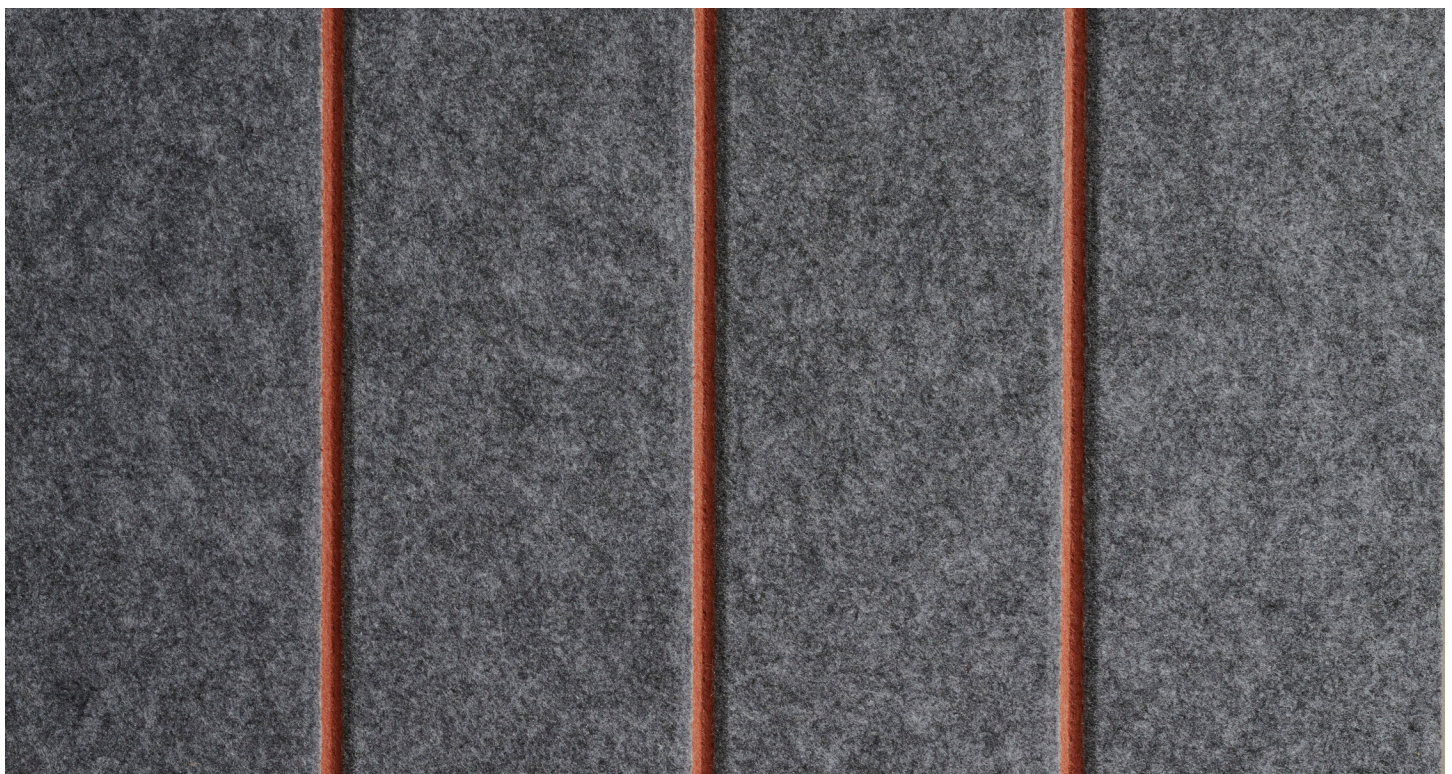
SF-44



SF-47



SF-48



SO-52 + SF-34

Always request physical samples prior to ordering to ensure color accuracy.