

**DFB**



**SOUND OUT**



# SOUND OUT<sup>®</sup>

Sound Out™ acoustical wall and ceiling panels aesthetically transforms a space while absorbing sound. The panels help to reduce echo and reverberation in large rooms and targeted areas.

DFB's Sound Out™ PET product line includes multiple panel systems, offering versatile designs in over 90 rich colors, and endless custom capabilities.

**MADE IN NYC**™ Sound Out™ PET is made of 75% recycled polyester material.







Sound Out™ Tetris



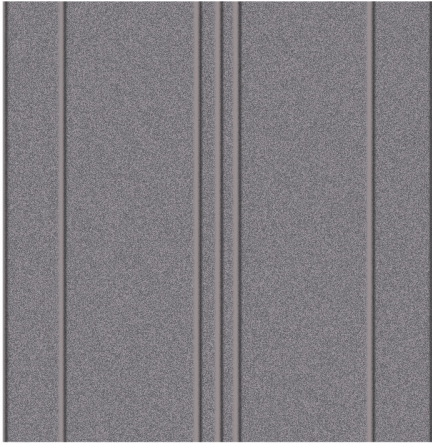
# LANE



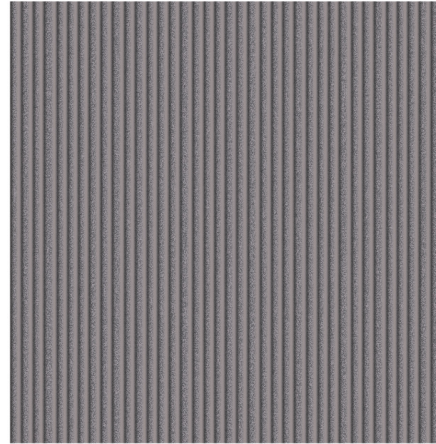
A collection of acoustical panels, offered in 9 V-groove linear patterns. Lane is available in a solid color or two-tone panel.



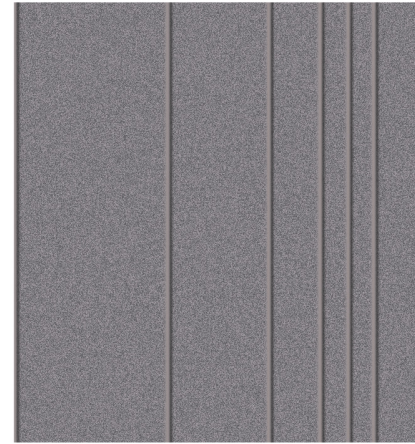
Patterns shown are not to scale. All patterns have beveled edges on both sides except Pattern D.  
 Pattern specs are for single colors only and change slightly for two-tone patterns.



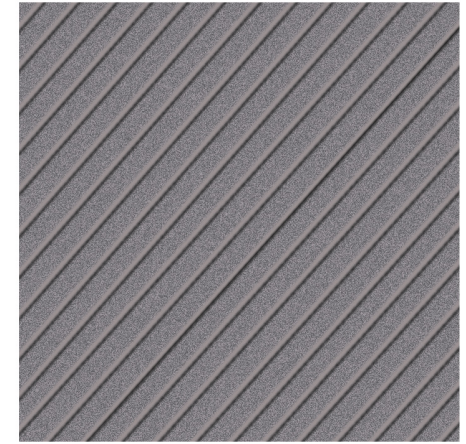
Pattern A  
 3", 7.5", 1.25", 1.25", 3"



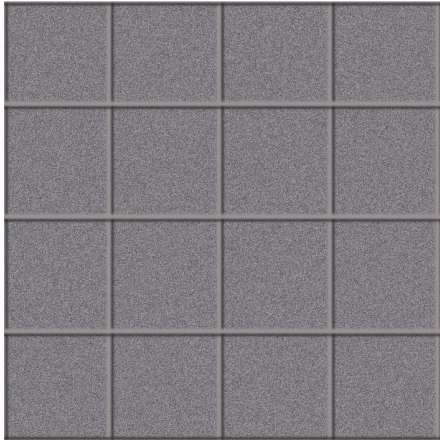
Pattern B  
 0.5"



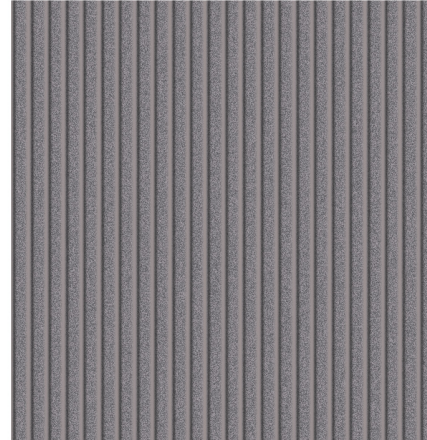
Pattern C  
 9", 6", 3", 1.25", 1.25", 3"



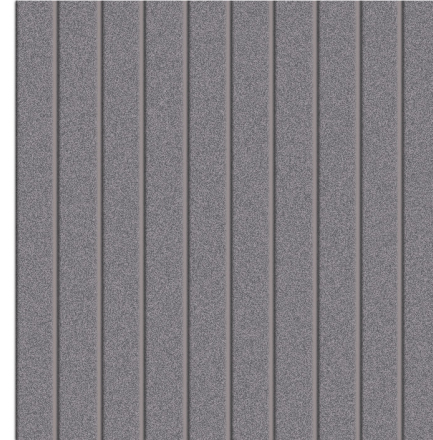
Pattern D  
 2.3932"



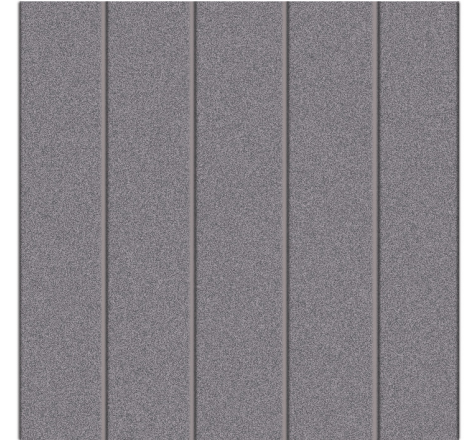
Pattern E, 8" Squares



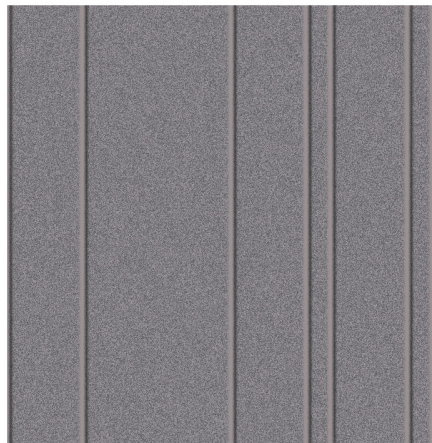
Pattern F, 1"



Pattern G, 2.9375"



Pattern H, 4.7"



Pattern I  
 4", 8", 4", 1.75", 4", 1.75"

- **Product:** Lane Solid Color
- **Panel Thickness:** 0.47" & 0.94" (12mm, 24mm)
- **Panel Width:** 47"
- **Panel Height:** 109"
- **V Groove:** 6.5mm (Pattern B, Pattern F 5mm depth)
- **Acoustics:** ASTM C 423: 1" 0.75 NRC, 0.74 SAA; 1/2" 0.30 NRC, 0.33 SAA
- **Custom** Custom patterns available upon request

- 
- **Product:** Lane Two-Tone
  - **Panel Thickness:** 12mm + 3mm felt & 24mm + 3mm felt
  - **Panel Width:** 39"
  - **Panel Height:** 109"



# MERIDIAN



Acoustical PET wall covering with a ribbed texture.

- **Product:** Sound Out™ Meridian
- **Panel Thickness:** 0.47" or 0.94" (12mm, 24mm)
- **Tile Size:** Meridian 1: 23 5/8" x 6"h, Meridian 2: 24" x 24"  
Meridian 3: 15.75" x 31.5"h
- **Panel Size:** Meridian 4: 47" x 109" (custom lengths available)
- **Acoustics:** ASTM C423: 1" 0.75 NRC, 0.74 SAA; 1/2" 0.30 NRC



- **Product:** Sound Out™ Meridian Curve
- **Panel Thickness:** 0.47" or 0.94" (12mm, 24mm)
- **Panel Size:** 47" x 109"
- **Radius:** 6"







# CURRENT

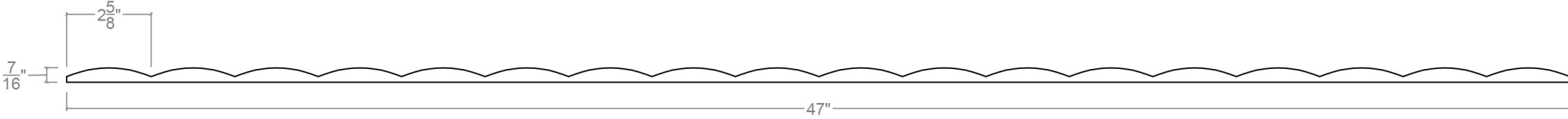
Acoustical PET wall covering featuring curved fabric reveals that protrude outward creating an organic pattern.



- **Product:** Sound Out™ Current
- **Panel Thickness:** 12mm + 6mm
- **Panel Size:** 47 x 108"
- **Acoustics:** ASTM C423: 0.6 NRC, 0.57 SAA
- **Colors:** Available in one color or two colors (base + fabric reveals)
- **Custom:** Custom patterns available upon request



**TIDE 2** creates a three-dimensional look, elevating any space.





## Traditional Solid Panels



- **Composition:** 100% Polyester Fiber (PET)
- **Application:** Wall & Ceiling
- **Panel Thickness:** 0.47" or 0.94" (12mm, 24mm)
- **Panel Width:** 47" x 109"
- **Acoustics:** ASTM C 423: 1" 0.75 NRC, 0.74 SAA; 1/2" 0.30 NRC, 0.33 SAA
- **Custom:** Custom sizes available up to 10 feet with potential MOQ









[sales@dfbsales.com](mailto:sales@dfbsales.com)  
[dfbsales.com](http://dfbsales.com)



INDOOR ADVANTAGE GOLD  
FURNITURE